



NEW MEXICO

2011 LOBO VOLLEYBALL



Assistant Director - Athletic Communications: Andrew Woerpel Office: (505) 925-5520 Email: awoerpel@unm.edu Cell: (970) 227-5053

2011 SCHEDULE/RESULTS [7-3, 0-0 MWC]			
Date	Opponent	Location	Time/Result
Aug. 20	Alumni (Ex.)	Johnson Center	W, 3-1
Aug. 26-27 --- MCM Elegante Lobo Classic			
Aug. 26	South Florida	Johnson Center	W, 3-1
Aug. 27	Nebraska	Johnson Center	L, 0-3
Sept. 2-4 --- Fiesta Bowl Classic			
Sept. 2	vs. Hampton	Flagstaff, Ariz.	W, 3-0
Sept. 3	vs. San Jose State	Flagstaff, Ariz.	W, 3-1
Sept. 3	at Northern Arizona	Flagstaff, Ariz.	L, 2-3
Sept. 9-10 --- Comcast/Sheraton Lobo Invitational			
Sept. 9	UC Irvine	Johnson Center	W, 3-2
Sept. 10	Portland State	Johnson Center	W, 3-0
Sept. 10	Montreal (Ex.)	Johnson Center	W, 3-0
Sept. 16-17 --- Pitt Blue and Gold Classic			
Sept. 16	at Pittsburgh	Pittsburgh, Pa.	L, 2-3
Sept. 17	vs. Delaware	Pittsburgh, Pa.	W, 3-1
Sept. 17	vs. Temple	Pittsburgh, Pa.	W, 3-1
Sept. 23	*TCU	Johnson Center	7 p.m.
Sept. 26	Texas Tech	Johnson Center	7 p.m.
Sept. 29	*at Air Force	Colorado Springs, Colo.	7 p.m.
Oct. 1	*at Boise State	Boise, Idaho	1 p.m.
Oct. 4	at New Mexico State	Las Cruces, N.M.	7 p.m.
Oct. 6	*UNLV	Johnson Center	7 p.m.
Oct. 9	*ISDSU	Johnson Center	12 p.m.
Oct. 13	*#at Colorado State	Fort Collins, Colo.	6 p.m.
Oct. 15	*at Wyoming	Laramie, Wyo.	7 p.m.
Oct. 21	*at TCU	Fort Worth, Texas	6 p.m.
Oct. 23	at UT-Pan American	McAllen, Texas	1 p.m.
Oct. 27	*Boise State	Johnson Center	7 p.m.
Oct. 29	*Air Force	Johnson Center	1 p.m.
Nov. 3	*at SDSU	San Diego, Calif.	8 p.m.
Nov. 5	*at UNLV	Las Vegas, Nev.	2 p.m.
Nov. 10	*#Wyoming	Johnson Center	6 p.m.
Nov. 12	*Colorado State	Johnson Center	1 p.m.
Nov. 18-20 --- Mountain West Tournament (Hosted by UNM)			
Nov. 18	#MW Quarterfinals	Johnson Center	TBA
Nov. 19	#MW Semifinals	Johnson Center	TBA
Nov. 20	!MW Championship	Johnson Center	TBA
Nov. 26	Long Beach State	Long Beach, Calif.	8 p.m.
Home Games in Bold			
* = Mountain West Conference Matches			
# = The Mtn. (Mountain West Sports Network), ! = CBS C			



LOBO VOLLEYBALL (7-3; 0-0 MW)

UP NEXT: MATCHES #11 & 12

SEPT. 23 - VS. TCU, 7 P.M. AT JOHNSON CENTER

SEPT. 26 - VS. TEXAS TECH, 7 P.M. AT JOHNSON CENTER

Follow Along ... All home matches will be web streamed through All Access on GoLobos.com. Click the Lobo TV button to watch the Lobos at Johnson Center this season. GameTracker also will be available for every Lobo home game through GoLobos.com.

Jam Johnson and Love Red Live Green ... The volleyball team would like to see fans show up in bunches for Jam Johnson night vs. TCU Sept. 23 at 7 p.m. Tickets will be sold at the low price of \$3. Senior Kelly Williamson is putting together her "Love Red Live Green" campaign that night as well. The aim of the event it to have no trash generated during the game end up in the landfill, so there will be recycling and composting bins set up in place of all trash cans in the gym.

Nelson Faces Familiar Foe ... Head coach Jeff Nelson will face the school that gave him his head coaching start in Texas Tech. Nelson compiled a record of 166-95 in nine years as the Red Raiders coach from 1995-02. He had great success at Texas Tech, coaching the Red Raiders to five NCAA tournament appearances.

Against TCU (8-6) ... The Lobos are 8-6 all time versus the Horned Frogs. The two teams split matches last year with UNM winning 3-0 in Albuquerque and TCU winning 3-0 in Fort Worth. UNM holds an impressive 6-1 record when playing the Horned Frogs in Johnson Center.

Against Texas Tech (8-9) ... The Lobos are 8-9 all time versus the Red Raiders. The Lobos have lost in the last three meetings between the two teams, most recently in 2001, when Texas Tech won 3-0 at home.

LOBO 2011 SEASON TIDBITS

- Two Lobos were named to the Pitt Blue and Gold Invitational All-Tournament Team: -Ashley Rhoades and Allison Buck. Buck set a new career high in digs with 36 in UNM's victory over Delaware.
- Senior libero Allison Buck has moved into the top three on the UNM all-time digs list, having recorded 124 digs thus far in her final season as a Lobo. She has 1,272 digs overall.
- Ashley Rhoades is leading the Mountain West in kills per set with 4.10 and points per set with 4.79.

THE 2011 NEW MEXICO LOBOS - 2011 AVERAGES

No.	Name	Pos.	Ht.	Yr./Exp.	Hometown/Last School	KPS	APS	SAPS	DPS	BPS	PPS
1	Mariah Agre	S	5-10	So./1L	San Diego, Calif./Elsinore HS	0.74	9.90	0.31	2.77	0.31	1.22
8	Allison Buck	L	5-7	Sr./3L	Camas, Wash./Camas HS	0.05	0.77	0.20	5.07	0.00	0.25
21	Miquella Lovato	L/DS	5-2	So./1L	Pojoaque, N.M./Pojoaque HS	0.00	0.20	0.10	2.40	0.00	0.10
18	Ashley Newman	OH	6-0	So./1L	Albuquerque, N.M./St. Pius X HS	1.33	0.07	0.07	0.40	0.27	1.55
4	Ashley Rhoades	MB	5-11	Sr./3L	Rio Rancho, N.M./Rio Rancho HS	4.12	0.03	0.15	0.93	0.93	4.81
3	Chantale Riddle	MB	6-0	RS Fr./HS	Roswell, N.M./Roswell HS 2008	1.72	0.05	0.00	0.31	0.77	2.14
6	Lexi Ross	MB	6-2	So./HS	Lake Oswego, Ore./Lakeridge	1.18	0.06	0.00	0.35	0.71	1.53
5	Jordan Russell	S	5-7	Jr./1L	Stanley, N.M./Moriarty HS	0.10	1.40	0.20	0.20	0.00	0.30
13	Kelly Williamson	OH	6-1	Sr./2L	Buenos Aires, Argentina/Lincoln International School	3.30	0.17	0.03	2.40	0.45	3.60

NEWCOMERS

No.	Name	Pos.	Ht.	Yr./Exp.	Hometown/Last School	KPS	APS	SAPS	DPS	BPS	PPS
16	Elsa Krieg	MB	6-2	Fr./HS	Granby Colo./Middle Park HS	1.08	0.08	0.00	0.08	0.75	1.46
2	Hannah Johnson	S	5-11	Fr./HS	Longview, Wash./R.A. Long High School	MVP Greater St. Helens 2A Conference					
12	Megan Short	MB	6-3	Fr./HS	Arlington, Texas/Lamar High School	First-Team All-District					
11	Jayla Trombley	OH	5-10	Fr./HS	Rio Rancho N.M./Rio Rancho HS	0.75	0.00	0.00	0.42	0.17	0.88
20	Chelsea McCampbell	MB	6-2	Fr./HS	Rio Rancho N.M./Rio Rancho HS	All District Honorable Mention					
7	Cara Fisher	DS	5-3	Fr./HS	Manvel, Texas/Manvel HS	0.05	0.32	0.20	2.30	0.00	0.25

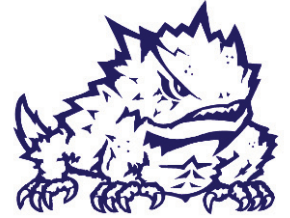
Head Coach: Jeff Nelson (Ball State, 1986), 78-40 at New Mexico (5th Year), 320-186 Overall (17th Year)

Assistant Coaches: Lisa Beauchene, Ben Wallis, Doug Manning (volunteer) Director of Operations: Jordie Hadfield

WWW.GOLOBOS.COM



LOBO VOLLEYBALL VS. TCU HORNED FROGS



JOIN US FOR THE
2ND ANNUAL
GREEN GAME
SEPTEMBER 23 AT
7:00PM IN JOHNSON
CENTER

ZERO WASTE CAMPAIGN
ALL WASTE FROM THIS GAME
WILL BE **COMPOSTED OR**
RECYCLED INSTEAD OF
ENTERING THE LANDFILL

love red. live green.
THE UNIVERSITY OF NEW MEXICO



“The beauty of the biotic community is an important measure of the rightness or wrongness of actions. A thing is right when it tends to preserve the integrity, stability and beauty of the biotic community. It is wrong when it tends otherwise.”

- Aldo Leopold

Over time, trash in landfills decomposes into the soil, but the process is extremely slow. Depending on local environmental conditions, much of the trash in a landfill can remain virtually intact for hundreds, or thousands, of years. For example, when one of Albuquerque’s old landfills was uncovered during the construction of a roadway, newspapers dating from 1948 were found intact and readable.

As our towns and cities grow, so do our landfills. The average landfill capacity in the United States is now 25 million tons; that’s up from just 1 million tons a decade ago. Every ton of trash that we send to the landfill represents additional space required for disposal.

LOBO VOLLEYBALL NOTES



Jeff Nelson
(Ball State, 1986)

- Head Coach
- 5th Season at New Mexico
- 17th Season Overall

Year-By-Year Record

School	Year	Record	Pct.	NCAA
Texas Tech	1995	21-12	.636	2nd Rnd
Texas Tech	1996	25-9	.735	1st Rnd
Texas Tech	1997	23-11	.676	
Texas Tech	1998	23-11	.676	1st Rnd
Texas Tech	1999	18-15	.545	
Texas Tech	2000	24-9	.727	1st Rnd
Texas Tech	2001	18-14	.563	1st Rnd
Texas Tech	2002	14-14	.500	
	8 yrs.	166-95	.634	5 app.
San Fran	2003	23-8	.742	1st Rnd
San Fran	2004	12-20	.375	
San Fran	2005	18-13	.581	
San Fran	2006	23-10	.697	
	4 yrs.	76-51	.598	1 app.
New Mexico	2007	16-13	.552	
	2008	22-7	.759	
	2009	20-10	.667	1st Rnd
	2010	20-10	.667	1st Rnd
	2011	7-3	.700	
	4 yrs.	86-43	.667	
Totals	16 yrs.	328-189	.634	8 app.

Other Experience

- Currently serves on NCAA West Regional Committee
 - Muncie Burriss HS assistant coach, 1995
 - Arizona State assistant coach, 1990-95
 - U.S. Olympic Festival West assistant coach, 1994
 - U.S. Olympic Festival North assistant coach, 1993
 - U.S. Junior National Boys head coach, 1992
 - U.S. Junior National Boys assistant coach, 1991
 - Minnesota assistant coach, 1989-90
 - Minnesota Monarchs (MLV) head coach, 1989
 - Minnesota Monarchs (MLV) assistant head coach, 1988
 - Nebraska graduate assistant, 1986-88
 - Ball State student-athlete, 1984-86
- 1985 team advanced to NCAA national semifinals

2011 Volleyball Staff

Assistant Coaches: Lisa Beauchene (Sacramento State, 2005); Ben Wallis (New Mexico State, 2000); Doug Manning (volunteer)
 Director of Operations: Jordie Hadfield
 Graduate Assistant Athletic Trainers: Carlos Gual, Dave Manning

About New Mexico (7-3, 0-0 MW) ... The Lobos' record is 7-3 after going 2-1 at the Pitt Blue and Gold Classic, beating Delaware, 3-1, Temple, 3-1 and losing to Pitt, 2-3 ... Seniors Allison Buck and Ashley Rhoades were named to the All-Tournament Team for their performances ... Buck set a new career-high in digs with 36 in the match with Delaware.

Last season, the Lobos made it to the NCAA Tournament for the second season in a row. The Lobos hadn't made it to two consecutive postseasons since they did it in the 1993, '94 seasons, which happened to be the end of a five-year postseason run that spanned from 1990-94, and was subsequently the last time the Lobos were in the NCAA Tournament. With the appearance in 2009, the Lobos broke a drought of 14 years between trips to the national post-season. With last year's postseason berth, UNM now has nine trips to the NCAA Tournament (1981, '88, '90, '91, '92, '93, '94, '09, 2010)

About TCU (13-0, 0-0 MW) ... Fresh off winning the Seton Hall Invitational, their fourth straight tournament title, the TCU Horned Frogs continue to remain undefeated in 2011 with a record of 13-0. TCU is one of just eight undefeated teams in the country. The 13-0 start to the season breaks the previous school record of 9-0 for best start to a season. The Horned Frogs currently sit atop the Mountain West standings.

About Texas Tech (12-1, 0-0 Big 12) ... The Red Raiders enter this weekend's tournament boasting a 12-1 record, marking the program's best start since 2000. The 12-match winning streak is the school's longest run since 1996 when the Red Raiders won 15-straight to open the season. The Red Raiders currently sit atop the Big 12 conference standings.

Get This Party Started ... When the Lobos get off to a fast start, it's usually a good sign they will take the match. So far in the 2011 season, the Lobos are 4-1 when winning the first set of a match. If it weren't for their hiccup against Pitt on Sept. 16, the Lobos would be undefeated when taking the first set of a match.

Digging for Gold ... Allison Buck set a new career-high in digs with 36 in UNM's win over Delaware Sept. 17 at the Pitt Blue and Gold Classic. Buck totaled 79 digs over three days on her way to being named to the all-tournament team. Buck bested her career high of 34 digs set just last week on Sept. 9 in UNM's win over UC Irvine.

Killin' It ... Ashley Rhoades currently sits atop the MW rankings for kills per set and points per set. She is averaging 4.10 KPS and 4.79 PPS in matches played so far in 2011. She set a career single-game high for kills with 26 against UC Irvine on Sept. 9.

Williamson Awakening ... Senior Kelly Williamson played her most complete game of the year, setting a new career-high in kills with 23 in UNM's 3-1 win over Delaware. The 6-2 senior from Buenos Aires, Argentina played with a bravado that all of the coaches new she already had in her. It was a breakout game for Williamson and is a great sign for things to come for her and the Lobos. Williamson recorded a double-double, finishing the match with a career-high 23 kills to go along with 12 digs.

Homegrown Lobos ... Almost half of the 15 players on the UNM roster are local New Mexicans. Seven current Lobos played at high schools in the state of New Mexico. Ashley Rhoades, Chelsea McCampbell and Jayla Trombley all played at Rio Rancho HS, Chantale Riddle (Roswell HS), Jordan Russell (Moriarty HS), Ashley Newman (St. Pius X) and Miquella Lovato (Pojoaque HS).

True Freshman Surprise ... True freshman Cara Fisher has seen a significant amount of playing time during the early stages of this season. The Manvel, Texas, native has played a significant amount of time in all of New Mexico's matches this season. Fisher was a late addition to the Lobos' squad, and so far, has been a very pleasant surprise. Her defensive skills are advancing quicker than anyone anticipated, meaning she will most likely continue to play in a significant amount of sets throughout this season. Fisher has shown that she can handle serving duties as well. In UNM's match against Portland State the Lobos reeled off 14-straight points, all while Fisher was serving.

Huge Crowd on hand vs. No. 5 Nebraska ... On Aug. 27 the Lobos hosted the No. 5 team in the nation Nebraska Huskers to a huge crowd of 4,112 fans. The crowd was larger than any crowd UNM hosted last season, beating out the 3,831 that rocked Johnson Center when the Lobos hosted Stanford. It is the second largest crowd ever to watch a match in

LOBO VOLLEYBALL NOTES

Johnson Center.

Preseason Accolades ... The Lobos were picked to finish second in the 2011 Mountain West Preseason Volleyball Poll. Seniors Allison Buck and Ashley Rhoades were named to the MW Preseason Team. UNM made this year's vote a close one, finishing just a shade behind CSU for the top spot. If the preseason vote is any indication, the Lobos are continuing to close the gap on CSU's dominance of the MW.

Playing The Best To Be The Best ... Over four seasons, head coach Jeff Nelson has been a big believer in scheduling a tough, challenging schedule for his team. The team has responded to the challenge each year compiling four-straight winning seasons including three 20-win seasons and two NCAA Tournament appearances.

It's not getting any easier for the Lobos in 2011. UNM faces three Top-25 programs and five 2010 NCAA Tournament participants.

The Lobos' undefeated conference record (12-4 overall) at home in 2010 ranks as the best home record UNM has compiled against the MW in program history. The 12 conference wins are the most conference wins by the Lobos since the MW formed in 1999 and most in any conference since 1996. The Lobos have also recorded three of their best finishes in conference over the last three seasons, each ranking in the top-ten all time in school history.

UNM Best Conference Records (by percentage)

1.	1991	1.000 (12-0) (WAC)
2.	1988	.833 (10-2) (HCAC)
3.	1996	.813 (13-3) (WAC)
4.	1981	.800 (8-2) (IMC)
5.	2010	.750 (12-4)
6.	1989	.750 (9-3) (HCAC)
7.	1990	.700 (7-3) (WAC)
8.	2008	.688 (11-5)
9.	1994	.643 (9-5) (WAC)
10.	2009	.625 (10-6)

Final RPI Rankings ... The official NCAA RPI rankings have the Lobos finishing the 2010 season at 43, which was second best among MW schools.

UNM Connections To USA Volleyball ...

Ashley Rhoades: participated in the 2011 USA Volleyball Open National Championships as a starting middle blocker for Team USA Blue. USA Blue went 8-1 in the four-day event, held in Dallas, Texas. USA Volleyball considers this event the National Championship for the sport of volleyball in the United States.

Kelly Williamson: Williamson competed in the USA Challenge Invitational Tournament for the BIP/USA Development Team in June. BIP (Bring it Promotions) in conjunction with USA Volleyball sent two teams of top-level collegiate players to compete in the event. Williamson played for the Red Team, which included players from top programs around the country.

Williamson's Accomplishments Outside of Volleyball ... First and foremost, Kelly was named a Rhodes Scholar Candidate in 2010. She has made UNM's Dean's List all three years she has attended UNM. She currently has a cumulative GPA of 4.02.

She is one of the UNM Student Athlete Advisory Committee Representatives. Kelly is involved in student government and is a Senator in ASUNM. Over the summer, Kelly had the chance to travel to Beijing, China and represent USA volleyball with Bring it Promotions. Upon the completion of competition, Kelly stayed an extra two weeks to volunteer at an NGO called The Nature Conservancy (TNC). TNC specializes in conservation work worldwide. The mission of the organization is to protect nature and preserve life. Kelly worked 9-5 everyday researching the biodiversity hotspots in countries such as Kazakhstan and Turkmenistan where TNC did not currently have any presence.

Kelly truly wants to make a difference in the world after graduation. Her dedication to her education and how she volunteers her time proves she is a very selfless person that genuinely wants to help others.

Buck Aiming For Lobo All-Time Career Mark ... Senior libero Allison Buck has moved

2011 AVCA TOP 25

(SEPT. 12)

Rk.	School (1st Pl. Vts.)	Pts.	Record	LWK
1	California (58)	1,498	13-0	1
2	Stanford (1)	1,424	8-1	2
3	Illinois (1)	1,378	11-0	3
4	Washington	1,226	9-1	4
5	Penn State	1,160	7-3	5
6	Florida	1,127	8-2	7
7	UCLA	1,114	9-2	6
8	Texas	1,032	6-3	8
9	Minnesota	1,014	5-2	9
10	Nebraska	993	7-1	10
11	Hawaii	932	10-1	11
12	Southern California	877	7-3	13
13	Purdue	799	11-0	14
14	Northern Iowa	708	12-1	15
15	Oregon	640	9-1	16
T16	Iowa State	586	9-2	12
T16	San Diego	586	13-0	17
18	Michigan	558	12-0	18
19	Pepperdine	318	6-5	21
20	Colorado State	254	6-3	19
T21	Long Beach State	200	6-4	24
T21	Miami (Fla.)	200	9-1	20
23	Florida State	175	7-4	NR
24	Ohio State	150	10-3	25
25	Oklahoma	122	13-3	22

RECEIVING VOTES: Tennessee 79; Kansas 60; Kentucky 46; Western Kentucky 42; Duke 35; Wichita State 30; Arizona 26; UC Davis 25; Texas A&M 21; Dayton 12; Louisville 12; Tulsa 12; Missouri 10; St. Mary's (Ca.) 7; Bowling Green 6; Central Florida 4; Cincinnati 4; Northern Illinois 4
Bold = 2011 UNM opponent

UNM'S 2011 RECORD WHEN...

Overall	7-3
Mountain West	0-0
Non-conference	7-3
Post-season	0-0
Home	3-1
Away	0-2
Neutral	4-0
Three games	2-1
Four games	4-0
Five games	1-2
Day games	3-0
Night games	4-3
Winning first set	4-1
Losing first set	3-2
Lobo records a double-double	4-2
Lobo records a triple-double	0-0
vs. Top 25 opponent	0-1
vs. America East	1-0
vs. Atlantic 10	1-0
vs. Big 10 Conference	0-1
vs. Big East Conference	1-1
vs. Big Sky Conference	1-1
vs. Big West Conference	0-0
vs. Conference USA	0-0
vs. Mid Eastern Conference	1-0
vs. Pac-10 Conference	0-0
vs. Sun Belt Conference	0-0
vs. West Coast Conference	1-0
vs. Western Athletic Conference	1-0

LOBO VOLLEYBALL NOTES

2011 MWC RANKINGS

SEASON STATS LEADERS

Individual (All Games)

Hitting Pct.....	.428, Brittany Reardon, BSU
Kills.....	4.10 ps, Ashley Rhoades-UNM
Assists.....	11.13 ps, Johnna Fouch-SDSU
Aces.....	0.43 ps, Kyle Sexton-SDSU
Blocks.....	1.54 ps, Megan Plourde-CSU
Digs.....	6.04 ps, Sarah Joeckel-TCU
Points.....	4.79 ps, Ashley Rhoades-UNM

Team (All Games)

Hitting Percentage.....	.267, TCU
Opponent Hitting Percentage.....	.128, TCU
Assists.....	13.36, ps TCU
Kills.....	14.45 ps, TCU
Blocks.....	2.73 ps, CSU
Service Aces.....	1.50, AFA
Digs.....	19.06, TCU
Win-Loss Percentage.....	1.000, TCU

Individual (MWC Games)

Hitting Pct.....	N/A
Kills.....	N/A
Assists.....	N/A
Aces.....	N/A
Blocks.....	N/A
Digs.....	N/A
Points.....	N/A

Team (MWC Games)

Hitting Percentage.....	N/A
Opponent Hitting Percentage.....	N/A
Assists.....	N/A
Kills.....	N/A
Blocks.....	N/A
Service Aces.....	N/A
Digs.....	N/A
Win-Loss Percentage.....	N/A

UNM IN THE MWC STATS

Individual	Overall	MWC
------------	---------	-----

Mariah Agre		
Service Aces	0.31/10th	
Assists	9.85/4th	

Allison Buck		
Digs	5.03/2nd	---

Ashley Rhoades		
Kills	4.10/1st	
Points	4.79/1st	---
Blocks	0.93/5th	
Hitting Percentage	.292/8th	

Kelly Williamson		
Points	3.60/7th	---
Kills	3.30/5th	

Chantale Riddle		
Blocks	.77/10th	---

Team	Overall	MWC
------	---------	-----

Hitting Percentage	.197/6th	---
Opp Hit Percentage	.132/2nd	---
Assists	11.57/5th	---
Kills	12.43/6th	---
Blocks	1.98/5th	---
Service Aces	1.08/8th	---
Win-Loss Pct.	.500/5th	---
Digs	16.80/2nd	---

into the top three on the UNM all-time digs list, having recorded 203 digs thus far in her final season as a Lobo, giving her a total of 1,272. As long as she stays healthy this year, she has a good shot at breaking the all-time record held by former Lobo Gayle Tripp, who currently sits atop the digs list with 1,578 digs.

UNM Career Digs

1.	Gayle Tripp	1,578	2005-08
2.	Sharon Browning	1,504	1989-92
3.	Allison Buck	1,272	2008-pres.
4.	Lisa Meeter	1,130	2007-10
5.	Tania Gooley	1,113	1991-94
6.	Alicia Bergmann	1,059	1992-95
7.	Maria Gurreri	1,048	1987-90
8.	Gretchen Gegenfurtner	1,048	1993-96
9.	Nao Ikeda	1,020	1986-89
10.	Paula Feathers	1,019	1995-98

Rhoades Aiming For Lobo All-Time Career Mark ... Senior Ashley Rhoades is currently No. 5 on the UNM all-time hitting efficiency list at .288. If she continues to be efficient in her attacks, she stands a good chance at moving up the list. Nao Ikeda-Nagatomo (1986-89) is just in front of her at No. 4 with a .292 hitting efficiency.

Career Hitting Efficiency (K-E-TA)

1.	Pauline Manser	.372 (1229-282-2549)	1988-91
2.	Kelly Knowles	.370 (284-60-343)	1980-82
3.	Laurel Luman	.331 (893-243-1965)	1990-93
4.	Nao Ikeda-Nagatomo	.292 (1040-327-2438)	1986-89
5.	Ashley Rhoades	.288 (659-221-1523)	2008-pres.
6.	Kim Hicks	.284 (1131-396-2584)	1980-81, '83
7.	Jocelyn Funk	.280 (190-57-475)	1983-86
8.	Tania Gooley	.275 (1579-556-3721)	1991-94
9.	Anna Lehne	.271 (668-241-1576)	2006-09
10.	Taylor Hadfield	.267 (835-326-1909)	2007-10

Winning Ways ... For the third consecutive season, New Mexico recorded a 20-win season. The Lobos finished the 2010 season 20-10 overall and 12-4 in MW action. The 12 conference wins are the most conference wins by the Lobos since the MW formed in 1999 and most in any conference since 1996.

UNM Most Overall Wins

1.	1983	28
2.	1981	26
3.	1988	25
4.	1991	23
5.	2008	22
	1990	22
	1989	22
8.	1982	21
9.	1994	20
	2009	20
	2010	20

UNM Most Conference Wins

1.	1996	13
2.	1991	12
	2010	12
3.	2008	11
4.	1988	10
	2009	10
6.	1994	9
	1989	9
8.	1993	8

LOBO VOLLEYBALL NOTES

	1981	8
10.	2007	7
	1992	7
	1990	7

8.	1996	23,274	1,552
9.	1994	19,770	1,412
10.	1993	19,138	1,276

Aiming For New Attendance Marks ... The Lobos have seen their numbers increase in several areas over the past four seasons under head coach Jeff Nelson. One that sticks out is the jump in attendance at Lobo volleyball matches in the Johnson Center. During the first weekend of action, the Lobos will host the MCM Elegante Tournament, which features a match against the No. 5 ranked Nebraska Cornhuskers. Nebraska has three national championships having won two over the past decade in 2000 and 2006.

The largest crowd of the 2010 season was recorded at the MCM Elegante Tournament when 3,831 fans showed up at the Johnson Center to see the Lobos take on annual powerhouse Stanford on Aug. 29. UNM averaged 2,232 fans over 15 home matches in 2010, ranking 12th in the nation. Last season marked the second time the Lobos hosted over 1,000 fans at every single home match of the season. Last season was the first time the Lobos accomplished the feat.

The mark of 3,831 fans against Stanford ranks fourth on the all-time UNM single match attendance list at Johnson Center and seventh overall including the years in The Pit.

2010 National Attendance Rankings (courtesy of the NCAA)

School	Avg.	Total	#
1. Hawaii	6,169	123,382	20
2. Nebraska	4,632	69,479	15
3. Wisconsin	3,737	52,323	14
4. Washington	3,298	49,470	15
5. Penn State	3,274	65,481	20
6. Florida	2,660	45,217	17
7. Texas	2,629	52,571	20
8. Minnesota	2,621	47,171	18
9. Stanford	2,526	32,833	13
10. Wichita State	2,501	30,014	12
11. Michigan State	2,279	38,742	17
12. New Mexico	2,232	33,480	15
13. Colorado State	2,180	37,064	17
14. Northern Iowa	2,116	27,510	13
15. Missouri	2,073	26,946	13
16. Illinois	2,043	30,646	15
17. Purdue	1,988	35,780	18
18. Kansas State	1,949	29,232	15
19. Iowa State	1,860	27,907	15
20. Southern California	1,583	23,739	15
21. Michigan	1,504	19,554	13
22. New Mexico State	1,476	16,241	11
23. Texas A&M	1,475	20,643	14
24. TCU	1,319	21,097	16
25. Kentucky	1,316	22,370	17

UNM Average Attendance Top 10

(1996-partial 1999 in University Arena/The Pit)

Year	Total	Average
1. 1991	28,190	2,349
2. 2010	33,480	2,232
3. 1992	27,237	1,702
4. 2009	23,477	1,677
5. 1995	22,915	1,636
6. 1990	20,493	1,576
7. 2008	20,408	1,570

2010 Home Attendance Marks

3,831	Aug. 29 vs. Stanford
3,478	Nov. 13 vs. Wyoming
2,872	Nov. 5 vs. TCU
2,408	Nov. 26 vs. SDSU
2,252	Sept. 14 vs. New Mexico State
2,182	Oct. 23 vs. Utah
2,151	Oct. 21 vs. BYU
2,053	Nov. 11 vs. Colorado State
1,991	Sept. 10 vs. Southern Methodist
1,832	Sept. 11 vs. UC Santa Barbara
1,789	Oct. 2 vs. UNLV
1,787	Aug. 27 vs. Pepperdine
1,780	Sept. 30 vs. Air Force
1,579	Sept. 10 vs. Sacramento State
1,495	Aug. 28 vs. Tulane

Lobos on Television ... UNM will play in front of a televised audience three times during the MW regular season beginning with an Oct. 9 contest against SDSU at Johnson Center. CBS SN will carry the game. UNM also will reach a national audience in matches at Colorado State on Oct. 13 in Fort Collins, Colo., and against Wyoming on Nov. 10 in Albuquerque. Both matches will air on The Mtn. UNM and Johnson Center also will play host to the MW tournament set to take place Nov. 18-20. The quarterfinals and semifinals will be broadcast by The Mtn. on the 18th and 19th, with the championship match airing on CBS SN on the 20th.

2011 Mountain West Preseason Info

School	Points (1st Place Votes)
1. Colorado State (5)	60
2. New Mexico (3)	56
3. San Diego State	51
4. TCU	41
5. Wyoming	27
6. Boise State	25
7. UNLV	20
8. Air Force	8

2010 PRESEASON ALL-MWC TEAM

Player,	Class,	Pos.,	Team
Megan Plourde	Jr.	MB	Colorado State
Ashley Rhoades	Sr.	MB	New Mexico
Andrea Hannasch	Jr.	MB	San Diego State
Kristen Hester	Sr.	MB	TCU
Jodi Purdy	Jr.	OH	Wyoming
Setter: Megan Munce	Jr (RS)	S	TCU
Libero: Allison Buck	Sr.	L	New Mexico

Preseason Players of the Year:
Megan Plourde, Colorado State

2011 CURRENT OVERALL STATS AND RESULTS

The Automated ScoreBook New Mexico Combined Team Statistics (as of Sep 17, 2011) All matches

RECORD:	OVERALL	HOME	AWAY	NEUTRAL
ALL GAMES	7-3	3-1	0-2	4-0
CONFERENCE	0-0	0-0	0-0	0-0
NON-CONFERENCE	7-3	3-1	0-2	4-0

#	Player	sp	Attack				pct	Set		Serve			re	Dig		Blocking					points	
			k	k/s	e	ta		a	a/s	sa	se	sa/s		dig	dig/s	bs	ba	total	blk/s	be		bhe
4	RHOADES, Ashley	40	165	4.12	50	391	.294	1	0.03	6	9	0.15	0	37	0.93	6	31	37	0.93	1	3	192.5
13	WILLIAMSON, Kelly	40	132	3.30	72	437	.137	7	0.17	1	17	0.03	9	96	2.40	4	14	18	0.45	2	0	144.0
3	RIDDLE, Chantale	39	67	1.72	25	223	.188	2	0.05	0	0	0.00	0	12	0.31	3	27	30	0.77	3	1	83.5
6	ROSS, Lexi	34	40	1.18	20	109	.183	2	0.06	0	0	0.00	0	12	0.35	0	24	24	0.71	6	0	52.0
1	AGRE, Mariah	39	29	0.74	4	78	.321	386	9.90	12	5	0.31	0	108	2.77	1	11	12	0.31	2	7	47.5
18	NEWMAN, Ashley	30	40	1.33	21	125	.152	2	0.07	2	7	0.07	0	12	0.40	1	7	8	0.27	1	0	46.5
16	KRIEG, Elsa	12	13	1.08	8	39	.128	1	0.08	0	0	0.00	0	1	0.08	0	9	9	0.75	1	0	17.5
11	TROMBLEY, Jayla	12	9	0.75	10	42	-.024	0	0.00	0	1	0.00	0	5	0.42	1	1	2	0.17	0	0	10.5
7	FISHER, Cara	40	2	0.05	0	4	.500	13	0.32	8	10	0.20	6	92	2.30	0	0	0	0.00	0	0	10.0
8	BUCK, Allison	40	2	0.05	0	9	.222	31	0.77	8	1	0.20	6	203	5.07	0	0	0	0.00	0	0	10.0
21	LOVATO, Miquella	40	0	0.00	0	1	.000	8	0.20	4	5	0.10	5	96	2.40	0	0	0	0.00	1	0	4.0
5	RUSSELL, Jordan	10	1	0.10	0	1	1.000	14	1.40	2	4	0.20	0	2	0.20	0	0	0	0.00	0	0	3.0
	TEAM	-	-	-	-	-	-	-	-	-	-	-	0	-	-	-	-	-	-	-	-	-
	NEW MEXICO	40	500	12.50	210	1459	.199	467	11.68	43	59	1.08	26	676	16.90	16	124	78.0	1.95	17	11	621.0
	Opponents	40	454	11.35	253	1509	.133	423	10.57	26	84	0.65	43	596	14.90	15	147	88.5	2.21	25	16	568.5

Team Statistics	NM	OPP
ATTACK		
Kills	500	454
Errors	210	253
Total Attacks	1459	1509
Attack Pct	.199	.133
Kills/Set	12.5	11.4
SET		
Assists	467	423
Assists/Set	11.7	10.6
SERVE		
Aces	43	26
Errors	59	84
Aces/Set	1.1	0.6
SERVE RECEPTIONS		
Errors	26	43
Errors/Set	0.6	1.1
Attempts	697	844
Reception Pct	.963	.949
DEFENSE		
Digs	676	596
Digs/Set	16.9	14.9
BLOCKING		
Block Solo	16	15
Block Assist	124	147
Total Blocks	78.0	88.5
Blocks/Set	2.0	2.2
Block Errors	17	25
Ball handling errors	11	16
ATTENDANCE		
Total	9751	812
Dates/Avg Per Date	4/2438	2/406
Neutral site #/Avg	4/66	
Current win streak	2	-
Home win streak	2	-

Date	Opponent	Score	Score by set	Att.
Aug 26	USF	w 3-1	27-29,25-19,25-19,25-21	1879
Aug 27	#5 NEB	L 0-3	16-25,17-25,17-25	4112
Sep 02	vs Hampton	w 3-0	25-9,25-11,25-14	52
Sep 03	vs San Jose State	w 3-1	22-25,25-17,25-17,25-21	95
Sep 03	at Northern Arizona	L 2-3	17-25,25-27,25-17,25-22,13-15	473
Sep 09	UCI	w 3-2	25-15,22-25,25-15,20-25,15-9	2192
Sep 10	PSU	w 3-0	25-8,25-14,25-16	1568
Sep 16	at PITT	L 2-3	25-19,25-18,24-26,24-26,13-15	339
Sep 17	vs Delaware	w 3-1	21-25,25-13,25-16,25-23	52
Sep 17	vs Temple	w 3-1	25-16,16-25,25-22,25-21	67

Record in 3-set matches: 2-1
Record in 4-set matches: 4-0
Record in 5-set matches: 1-2

2010 FINAL OVERALL STATS AND RESULTS

RECORD:	OVERALL	HOME	AWAY	NEUTRAL
ALL MATCHES	20-10	12-4	13-2	3-2
CONFERENCE	12-4	8-0	4-4	0-0
NON-CONFERENCE	8-6	5-2	1-2	2-2

##	STATS SUMMARY	ATTACK					SET			SERVE			DIG		BLOCKING				Points			
		SP	K	K/S	E	TA	Pct	A	A/S	SA	SE	SA/S	RE	DIG	D/S	BS	BA	TB		B/S	BE	BHE
2	Meeter, Lisa	106	357	3.37	128	951	.241	54	0.51	23	17	0.22	35	324	3.06	13	27	40	0.38	3	1	406.5
12	Hadfield, Taylor	105	323	3.08	121	723	.279	11	0.10	27	38	0.26	0	113	1.08	15	67	82	0.78	22	0	398.5
13	Williamson, Kelly	106	296	2.79	144	881	.173	10	0.09	7	46	0.07	1	83	0.78	8	49	57	0.54	9	1	335.5
4	Rhoades, Ashley	106	256	2.42	98	623	.254	3	0.03	4	3	0.04	1	44	0.42	22	93	115	1.08	4	2	328.5
7	Michaelsen, Jade	104	92	0.88	31	289	.211	1087	10.45	18	18	0.17	0	220	2.12	10	43	53	0.51	8	11	141.5
16	Barber, Rachel	80	48	0.60	31	149	.114	4	0.05	0	0	0.00	1	21	0.26	2	44	46	0.57	2	2	72.0
6	Ross, Lexi	35	11	0.31	14	54	-.056	0	0.00	0	0	0.00	0	10	0.29	3	22	25	0.71	7	0	25.0
18	Newman, Ashley	21	2	0.10	9	22	-.318	0	0.00	0	0	0.00	0	3	0.14	0	3	3	0.14	0	0	3.5
1	Agre, Mariah	94	6	0.06	1	13	.385	56	0.60	15	17	0.16	3	225	2.39	0	0	0	0.00	2	3	21.0
8	Buck, Allison	106	4	0.04	1	22	-.136	61	0.58	22	25	0.21	29	424	4.00	0	0	0	0.00	0	3	26.0
11	Wong, Amy	33	1	0.03	2	5	-.200	2	0.06	1	3	0.03	2	32	0.97	0	1	1	0.03	0	2	2.5
5	Russell, Jordan	9	0	0.00	0	0	.000	1	0.11	0	1	0.00	0	4	0.44	0	0	0	0.00	1	0	0.0
17	Torr, Carli	7	0	0.00	0	0	.000	1	0.14	0	0	0.00	0	8	1.14	0	0	0	0.00	0	0	0.0
21	Lovato, Miquella	93	0	0.00	1	5	-.200	20	0.22	1	6	0.01	10	114	1.23	0	0	0	0.00	0	0	1.0
	NEW MEXICO.....	106	1396	13.17	582	3739	.218	1310	12.36	118	1641	1.11	87	1626	15.34	73	350	248.0	2.34	58	25	1762.0
	Opponents.....	106	1325	12.50	597	3847	.189	1244	11.74	87	2240	0.82	118	1454	13.72	69	357	247.5	2.33	45	23	1659.5

DATE	OPPONENT	W/L	SCORE	SCORE-BY-GAME	ATTEND
!Aug 27, 2010	PEPPERDINE	W	3-0	25-15,25-22,25-22	1,787
!Aug. 28, 2010	TULANE	W	3-0	25-20,25-18,25-20	1,495
!Aug. 29, 2010	#4 STANFORD	L	0-3	14-25,18-25,20-25	3831
#Sept. 2, 2010	vs Michigan State	L	2-3	25-22,19-25,27-25,24-26,10-15	136
#Sept. 3, 2010	vs #10 Southern California	L	0-3	19-25,19-25,20-25	0
#Sept. 4, 2010	at #4 Hawai'i	L	0-3	15-25,14-25,21-25	6,332
^Sept. 10, 2010	SACRAMENTO STATE	W	3-1	25-16,25-23,21-25,25-14	1,579
^Sept. 10, 2010	SOUTHERN METHODIST	W	3-1	23-25,25-11,25-20,25-17	1,991
*Sept. 11, 2010	UC SANTA BARBARA	L	2-3	25-20,20-25,19-25,25-18,10-15	1,832
Sept. 14, 2010	NEW MEXICO STATE	W	3-2	20-25,25-16,21-25,25-17,15-7	2,252
\$Sept. 17, 2010	vs South Florida	W	3-1	19-25,25-15,25-16,25-13	0
\$Sept. 18, 2010	vs Jacksonville	W	3-0	25-22,25-21,25-18	0
\$Sept. 23, 2010	vs Florida Atlantic	W	3-1	24-26,25-15,25-18,25-17	0
*Sept. 23, 2010	at San Diego State	L	0-3	24-26,22-25,12-25	167
*Sept. 30, 2010	AIR FORCE	W	3-0	25-22,25-13,25-13	1,780
*Oct. 2, 2010	UNLV	W	3-0	25-19,25-12,25-21	1,789
*Oct. 8, 2010	at TCU	L	0-3	21-25,25-27,23-25	1,557
*Oct. 14, 2010	at Wyoming	W	3-0	26-24,25-21,25-22	622
*Oct. 16, 2010	at #16 Colorado State	L	0-3	16-25,21-25,19-25	3,200
*Oct. 21, 2010	BYU	W	3-1	23-25,25-20,25-23,25-18	2,151
*Oct. 23, 2010	UTAH	W	3-1	14-25,25-18,25-23,25-23	2,182
*Oct. 29, 2010	at UNLV	W	3-1	22-25,25-17,25-9,25-19	296
*Oct. 31, 2010	at Air Force	W	3-1	25-13,25-16,22-25,25-6	367
*Nov. 5, 2010	TCU	W	3-0	25-22,25-14,25-17	2,872
*Nov. 11, 2010	#13 COLORADO STATE	W	3-0	25-21,25-22,25-23	2,053
*Nov. 13, 2010	WYOMING	W	3-0	25-21,25-15,25-19	3,478
*Nov. 18, 2010	at Utah	W	3-1	26-24,19-25,25-23,25-18	472
*Nov. 20, 2010	at BYU	L	1-3	20-25,25-22,15-25,21-25	1,187
*Nov. 26, 2010	SAN DIEGO STATE	W	3-0	25-17,25-21,25-21	2,408
%Dec. 3, 2010	at #6 Southern California	L	0-3	19-25,8-25,18-25	1,412

! MCM Elegante Lobo Classic
\$ Hilton Garden Inn Invitational

Hawaiian Airlines Wahine Classic
* Mountain West Conference match

^ Comcast Lobo Challenge
% NCAA Tournament

ATTENDANCE	Home	Away
Total	33,480	15,612
Matches/Avg.	15/2,232	10/1,561
Neutral site #/Avg	5/27	
Current win streak	0	
Home win streak	9	

2010 MW FINAL STATS AND RESULTS

RECORD: OVERALL HOME AWAY
 CONFERENCE 12-4 8-0 4-4

##	STATS SUMMARY	ATTACK					SET		SERVE			DIG			BLOCKING				Points			
		SP	K	K/S	E	TA	Pct	A	A/S	SA	SE	SA/S	RE	DIG	D/S	BS	BA	TB		B/S	BE	BHE
2	MEETER, Lisa	54	197	3.65	70	505	.251	29	0.54	10	6	0.19	17	174	3.22	7	15	22	0.41	1	1	221.5
12	HADFIELD, Taylor	54	163	3.02	61	352	.290	4	0.07	13	16	0.24	0	45	0.83	11	36	47	0.87	13	0	205.0
4	RHOADES, Ashley	54	154	2.85	53	374	.270	2	0.04	3	1	0.06	1	28	0.52	15	46	61	1.13	1	2	195.0
13	WILLIAMSON, Kelly	54	139	2.57	75	437	.146	6	0.11	3	21	0.06	0	40	0.74	5	23	28	0.52	3	0	158.5
7	MICHAELSEN, Jade	53	49	0.92	17	151	.212	587	11.08	9	11	0.17	0	116	2.19	4	25	29	0.55	5	9	74.5
16	BARBER, Rachel	41	30	0.73	14	79	.203	2	0.05	0	0	0.00	0	13	0.32	1	21	22	0.54	2	0	41.5
6	ROSS, Lexi	17	6	0.35	8	23	-.087	0	0.00	0	0	0.00	0	3	0.18	0	10	10	0.59	3	0	11.0
18	NEWMAN, Ashley	12	2	0.17	4	10	-.200	0	0.00	0	0	0.00	0	2	0.17	0	2	2	0.17	0	0	3.0
11	WONG, Amy	14	1	0.07	1	3	.000	1	0.07	0	0	0.00	0	15	1.07	0	0	0	0.00	0	2	1.0
1	AGRE, Mariah	49	3	0.06	1	7	.286	31	0.63	14	7	0.29	1	152	3.10	0	0	0	0.00	1	3	17.0
8	BUCK, Allison	54	2	0.04	1	17	.059	30	0.56	12	6	0.22	18	228	4.22	0	0	0	0.00	0	0	14.0
17	TORR, Carli	4	0	0.00	0	0	.000	1	0.25	0	0	0.00	0	5	1.25	0	0	0	0.00	0	0	0.0
5	RUSSELL, Jordan	3	0	0.00	0	0	.000	1	0.33	0	1	0.00	0	2	0.67	0	0	0	0.00	1	0	0.0
21	LOVATO, Miquella	45	0	0.00	1	5	-.200	8	0.18	1	3	0.02	3	52	1.16	0	0	0	0.00	0	0	1.0
	NEW MEXICO	54	746	13.81	306	1963	.224	702	13.00	65	72	1.20	41	875	16.20	43	178	132.0	2.44	30	17	943.0
	Opponents	54	677	12.54	315	2036	.178	631	11.69	41	109	0.76	65	740	13.70	35	183	126.5	2.34	22	14	844.5

DATE	OPPONENT	W/L	SCORE	SCORE-BY-GAME	ATTEND
*Sept. 23, 2010	at San Diego State	L	0-3	24-26,22-25,12-25	167
*Sept. 30, 2010	AIR FORCE	W	3-0	25-22,25-13,25-13	1,780
*Oct. 2, 2010	UNLV	W	3-0	25-19,25-12,25-21	1,789
*Oct. 8, 2010	at TCU	L	0-3	21-25,25-27,23-25	1,557
*Oct. 14, 2010	at Wyoming	W	3-0	26-24,25-21,25-22	622
*Oct. 16, 2010	at #16 Colorado State	L	0-3	16-25,21-25,19-25	3,200
*Oct. 21, 2010	BYU	W	3-1	23-25,25-20,25-23,25-18	2,151
*Oct. 23, 2010	UTAH	W	3-1	14-25,25-18,25-23,25-23	2,182
*Oct. 29, 2010	at UNLV	W	3-1	22-25,25-17,25-9,25-19	296
*Oct. 31, 2010	at Air Force	W	3-1	25-13,25-16,22-25,25-6	367
*Nov. 5, 2010	TCU	W	3-0	25-22,25-14,25-17	2,872
*Nov. 11, 2010	#13 COLORADO STATE	W	3-0	25-21,25-22,25-23	2,053
*Nov. 13, 2010	WYOMING	W	3-0	25-21,25-15,25-19	3,478
*Nov. 18, 2010	at Utah	W	3-1	26-24,19-25,25-23,25-18	472
*Nov. 20, 2010	at BYU	L	1-3	20-25,25-22,15-25,21-25	1,187
*Nov. 26, 2010	SAN DIEGO STATE	W	3-0	25-17,25-21,25-21	2,408

ATTENDANCE	Home	Away
Total	18,713	7,868
Matches/Avg.	8/2,339	8/984
Current win streak	1	
Home win streak	8	

2010 Mountain West Standings

(Final)

School	Conference				Overall				
	W-L	Pct.	Home	Away	W-L	Pct.	Home	Away	Neutral
Colorado State (17)	14-2	.875	7-1	7-1	26-5	.839	15-2	8-3	3-0
New Mexico	12-4	.750	8-0	4-4	20-10	.667	13-2	5-6	2-2
Utah	11-5	.688	6-2	5-3	17-14	.548	8-4	8-5	1-5
BYU	9-7	.562	4-4	5-3	14-16	.467	6-9	7-6	1-1
San Diego State	8-8	.500	6-2	2-6	16-16	.500	12-5	3-8	1-3
Wyoming	7-9	.438	4-4	3-5	22-10	.688	12-5	5-5	5-0
TCU	5-11	.312	4-4	1-7	15-16	.484	9-7	2-9	4-0
UNLV	5-11	.312	4-4	1-7	10-20	.333	7-9	1-9	2-2
Air Force	1-15	.062	1-7	0-8	4-25	.138	2-9	0-12	2-4

SENIOR ALLISON BUCK



Libero • 5-7
Senior-3L
Camas, Wash.
Camas HS



CAREER SINGLE-MATCH HIGHS

Kills: 2, vs. Wyoming (10/22/09)
 Attacks: 4, vs. Wyoming (10/22/09)
 Hitting Percentage: 1.000, 5x - last vs. Northern Arizona (9/3/11)
 Assists: 6, 3x - last vs. Temple (9/17/10)
 Service Aces: 4, at New Orleans (11/27/09)
 Digs: 36, vs. Delaware (9/17/11)
 Total Blocks: N/A
 Solo Blocks: N/A
 Block Assists: N/A
 Points: 4.0, at New Orleans (11/27/09)

JUNIOR (2010): Shined as the Lobos top defensive player in her junior campaign ... Led the team in digs with 424 ... Displayed keen offensive ability as well, recording the second most assists on the team (61) and compiling the third most service aces on the team (23) ... Named to 2010 Academic All-Mountain West Team.

SOPHOMORE (2009): Academic All-Mountain West Conference ... Played in every set for the Lobos in 2009 ... Nike Portland Invitational All-Tournament Team ... MCM Elegante Lobo Classic All-Tournament Team ... Recorded three consecutive matches of 17 digs to start the season ... Recorded a career-high 23 digs against Baylor on Sept. 11 ... Played for Bring It Promotions/USA Development Team in July 2009, winning 2009 Global Challenge in Pula, Croatia ... Starting libero.

FRESHMAN (2008): Academic All-Mountain West Conference ... Made her first collegiate start on Aug. 29 against Central Arkansas ... Came in right away as a solid back row player ... Led team with 20 service aces ... Recorded her first collegiate kill at UNLV on Sept. 27 ... Recorded a season-high 17 digs at TCU on Sept. 17.

HIGH SCHOOL: Two-time first team all-state as junior and senior, honorable mention as a sophomore ... Three-time all-region and all-league ... Columbia Region MVP as a junior ... Greater St. Helen's League MVP as a senior, Co-MVP as a junior.

PERSONAL: Daughter of Ted and Katie Buck ... Older sister Annie played volleyball at Whitworth (1999-2002) and older sister Jessie played at Northwest (2002-05) ... Has a younger brother, Matt ... Majoring in Elementary Education ... Played club for Cowlitz Volleyball Club.

Buck's Career Stats

Year	SP-MP	K	E	TA	Pct.	A	SA	Dig	BS	BA	TB	Pts.
2008	98-29	1	9	21	-.381	8	20	190	0	0	0	21.0
2009	113-30	5	6	20	-.050	76	24	455	0	0	0	29.0
2010	106-30	4	1	22	.136	61	22	424	0	0	0	26.0
Totals	317-89	10	16	63	-.096	145	66	1,069	0	0	0	76.0

SENIOR ASHLEY RHOADES



Middle Blocker • 5-11
Senior-3L
Rio Rancho, N.M.
Rio Rancho HS

4

PERSONAL: Daughter of Ron and Terry Rhoades ... Has a younger sister, Madison, and a younger brother, Jeremy ... Madison is a sophomore on the Eastern New Mexico University volleyball team ... Majoring in Art Studio ... Played club with High Desert and New Mexico Juniors.

JUNIOR (2010): Stood out for the Lobos defensively in her junior campaign, leading the team in total blocks with 115 ... Finished the 2010 season fourth on the team in total kills (256) and points (328.5) ... Had a career night against TCU on Oct. 8, recording career-highs in kills (20) and total points (21) ... Named to 2010 Academic All-Mountain West Team ... Was a starting middle blocker for Team USA Blue in the 2011 USA Volleyball Open National Championships.

SOPHOMORE (2009): ESPN the Magazine Academic All-America nominee ... Academic All-Mountain West Conference ... Missed two matches at Air Force and San Diego State with a sprained ankle ... Had second consecutive week of 11 kills on Thursday (at BYU on Oct. 8) and 15 on Saturday (at Utah on Oct. 10), matching her career-high ... Named MWC Co-Player of the Week on Oct. 5 for a career week against San Diego State and Air Force to start October with 11 kills and .647 attack percentage vs. SDSU and career-high 15 kills and .619 percentage vs. AFA ... Pounded 12 kills at Wyoming on Sept. 26 ... Recorded 10 kills and career-high .714 (10k-0e-14ta) hitting percentage at Portland on Sept. 5 ... Had nine kills and career-high 10 blocks vs. UC Santa Barbara, including match-winning block ... Played for Bring It Promotions/USA Development Team in July 2009, winning 2009 Global Challenge in Pula, Croatia.

FRESHMAN (2008): Made first collegiate appearance vs. Idaho State on Aug. 30 and recorded four kills and two blocks ... Was second on the team in blocks with 1.11 per set in limited reserve action.

HIGH SCHOOL: Led Rio Rancho to three consecutive New Mexico 5A state championships ... Named New Mexico 5A Player of the Year ... Two-time first team all-state selection ... All-district performer in volleyball and basketball ... Also an all-state honoree in basketball.

CAREER SINGLE-MATCH HIGHS

Kills: 26, vs. UC Irvine (9/9/11)
 Attacks: 59, at Northern Arizona (9/3/11)
 Hitting Percentage: .714, at Portland (9/5/09)
 Assists: 1, 9x - last vs. Delaware (9/17/11)
 Service Aces: 2, 3x last vs. Portland State (9/10/11)
 Digs: 9, at Pitt (9/16/11)
 Total Blocks: 10, 2x - last vs. Colorado State (11/11/10)
 Block Assists: 8, vs. Michigan State (9/2/10)
 Points: 30.0, at UC Irvine (9/9/11)

Rhoades' Career Stats

Year	SP-MP	K	E	TA	Pct.	A	SA	Dig	BS	BA	TB	Pts.
2008	18-11	16	5	42	.262	0	0	2	8	12	20	30.0
2009	95-28	222	68	467	.330	5	2	28	19	81	100	283.5
2010	106-30	256	98	623	.254	3	4	44	22	93	115	328.5
Totals	219-69	494	171	1,132	.285	8	6	74	49	186	235	642.0

SENIOR KELLY WILLIAMSON



Outside Hitter • 6-2
Senior-3L
Buenos Aires, Argentina
Lincoln International School

13

cal Theater and Senior Science.

PERSONAL: Daughter of Cliff and Marcia Williamson ... Has a brother, Tyler ... Was born in Brasilia, Brazil ... Majoring in Conservation Biology with a minor in sustainability.

JUNIOR (2010): Heavily relied upon as a starter for the Lobos in her junior campaign ... Had a career defining game in a 3-2 victory over rival New Mexico State on Sept. 14, recording career highs in kills (20) and points (20.5) ... Channeled her inner defense in a 3-1 victory over Southern Methodist on Sept. 10 by picking up a career-high eight digs ... Finished the 2010 season third on the team in total kills (296), blocks (57) and points (335.5) ... Named to 2010 Academic All-Mountain West Conference Team ... Named the Lobo Club Student-Athlete of The Year for community service contributions as well as academic excellence ... Received the Cherry and Silver Award (team most valuable player), Scholar Athlete Award and the Most Improved Player Award at UNM's team banquet and also received the Jeanne Fairchild Endowed Scholarship ... Selected to the Co-SIDA/ESPN Academic All-America Third Team ... Selected along with other top-level collegiate players to compete in the USA Challenge Invitational Tournament for the BIP/USA Development Team in Beijing, China.

SOPHOMORE (2009): ESPN the magazine Academic All-America nominee ... Mountain West Conference Scholar-Athlete ... Academic All-MWC ... Had a career-high 9 kills, 9.5 points and 24 attempts at Arizona on Sept. 19 ... Had a big blocking weekend in Tucson with two solos vs. UTEP on Sept. 19 and three total vs. Tulane on Sept. 20 ... Spent the first summer session in Nepal working on sustainable technologies and rainwater harvesting systems ... Student-Athlete Advisory Committee representative.

FRESHMAN (2008): Academic All-Mountain West Conference ... Made first collegiate appearance against Idaho State on Aug. 30 and had four kills and one block ... Had a season-high 8 kills, 2 digs, 8.5 points and .727 hitting percentage (8K-0E-11TA) against Air Force on Oct. 18.

HIGH SCHOOL: Played for the Argentine Junior National Team ... Named Lincoln International Athlete of the Year as a sophomore and senior ... Two-time Community Service Award honoree ... Named Outstanding Freshman and Outstanding Sophomore ... Received awards in Spanish, Musi-

CAREER SINGLE-MATCH HIGHS

Kills: 23, vs. Delaware (9/17/11)
 Attacks: 68, at Northern Arizona (9/3/11)
 Hitting Percentage: .727, vs. Air Force (10/18/08)
 Assists: 2, 4x - last vs. USF (8/26/11)
 Service Aces: 2, vs. Air Force (9/30/10)
 Digs: 19, vs. Temple (9/17/11)
 Total Blocks: 5, 2x - last vs. UNLV (10/2/10)
 Solo Blocks: 2, 3x - last vs. Pitt (9/16/11)
 Block Assists: 5, 2x - last vs. UNLV (10/2/10)
 Points: 24.0, vs. Delaware (9/17/11)

Williamson's Career Stats

Year	SP-MP	K	E	TA	Pct.	A	SA	Dig	BS	BA	TB	Pts.
2008	27-18	26	10	79	.203	1	0	4	0	6	6	29.0
2009	49-22	59	40	218	.087	0	0	9	3	15	18	69.5
2010	106-30	296	144	881	.173	10	7	83	8	49	57	335.5
Totals	182-70	381	194	1,262	.148	11	7	96	11	70	81	434.0

JUNIOR JORDAN RUSSELL



Setter • 5-7 • Junior-2L
Stanley, N.M. • Moriarty HS

5

CAREER SINGLE-MATCH HIGHS

Kills: 1, vs. Temple (9/17/11)
 Attacks: 1, vs. Temple (9/17/11)
 Hitting Percentage: 1.000 vs. Temple (9/17/11)
 Assists: 14, vs. Temple (9/17/11)
 Service Aces: 1, 4x - last vs. Portland State (9/10/11)
 Digs: 5, vs. San Diego State (10/1/09)
 Total Blocks: N/A
 Solo Blocks: N/A
 Block Assists: N/A
 Points: 1.0, 5x - last vs. Temple (9/17/11)

SOPHOMORE (2010): Used sparingly as a reserve setter in her sophomore campaign ... Played in nine matches during the 2010 season.

FRESHMAN (2009): Mountain West Conference Scholar-Athlete ... Academic All-MWC ... Made first appearance as a Lobo against Portland State on Aug. 29 ... Key reserve at service line and in back row.

HIGH SCHOOL: Led Moriarty to back-to-back 4A state titles in 2007 and 2008 ... First team all-state setter in 2007 and 2008 ... Four-time all-district and two-time all-Metro in volleyball ... 2009 North 3-4A All-Star ... All-district and all-Metro basketball honoree in 2009 ... Four-year academic letterwinner.

PERSONAL: Daughter of Joe and Lori Russell ... Has three older sisters, Heather, April and Krystal ... Majoring in Education ... Played club with High Desert and New Mexico Juniors.

Russell's Career Stats

Year	SP-MP	K	E	TA	Pct.	A	SA	Dig	BS	BA	TB	Pts.
2009	20-0	0	0	0	.000	5	2	23	0	0	0	0.05
2010	9-0	0	0	0	.000	1	0	4	0	0	0	0.00
Totals	29-0	0	0	0	.000	6	2	27	0	0	0	0.05

SOPHOMORE MARIAH AGRE



Setter • 5-10 • Sophomore-HS
San Diego, Calif. • Elsinore HS

1

CAREER SINGLE-MATCH HIGHS

Kills: 6, vs. Delaware (9/17/11)
 Attacks: 15, vs. San Jose State (9/3/11)
 Hitting Percentage: 1.000, 6x - last vs. Hampton (9/2/11)
 Assists: 57, at Northern Arizona (9/3/11)
 Service Aces: 3, 3x - last vs. Delaware (9/17/11)
 Digs: 21, vs Utah (10/23/10)
 Total Blocks: 4, vs. Portland State (9/10/11)
 Solo Blocks: 1, at Pitt (9/16/11)
 Block Assists: 4, vs. Portland State (9/10/11)
 Points: 9.0, vs. Delaware (9/17/11)

FRESHMAN (2010): Was a huge contributor for the Lobos in her freshman campaign ... Finished the season third on the team in assists (56) ... Showed great defense finishing third on the team in total digs (225) ... Standout game came in a 3-1 win against Air Force on Oct. 31, when Agre had 18 assists and 11 digs ... Named to 2010 Academic All-Mountain West Team.

HIGH SCHOOL: 2010 graduate of Elsinore HS in Lake Elsinore, Calif. ... Played volleyball under UNM graduate Kim Horton ... Named to Under Armour All-American Senior Watch-List, and All-Tournament Team ... Sunbelt league champions ... First team All-Sunbelt league, All-Valley, and All-Area as a senior ... ninth in the state of Calif. for number of assists, top 30 in U.S. ... Played first two years of high school volleyball at Cathedral Catholic HS in San Diego, Calif. ... Led team to San Diego CIF Div 3 Championship as a sophomore ... Western League champions as a freshman ... Played club for the Temeula Vipers, coached by former Arizona All-American Dana Burkholder ... Team reached Junior Nationals in 2010.

PERSONAL: Daughter of Mary and Tom Spencer ... Has a sister, Melody (18) ... Plans to major in Computer Engineering

Agre's Career Stats

Year	SP-MP	K	E	TA	Pct.	A	SA	Dig	BS	BA	TB	Pts.
2010	28-17	6	1	13	.385	56	15	225	0	0	0	21.0
Totals	28-17	6	1	13	.385	56	15	225	0	0	0	21.0

SOPHOMORE MIQUELLA LOVATO



*Libero • 5-2 • Sophomore-HS
Pojoaque, N.M. • Pojoaque HS*

21

CAREER SINGLE-MATCH HIGHS

Kills: 9, N/A
 Attacks: 1, vs. Hampton (9/2/11)
 Assists: 2, 3x - last vs. Delaware (9/17/11)
 Service Aces: 2, vs. Delaware (9/17/11)
 Digs: 18, vs. Delaware (9/17/11)
 Total Blocks: N/A
 Solo Blocks: N/A
 Block Assists: N/A
 Points: 2.0, vs. Delaware (9/17/11)

FRESHMAN (2010): Made significant contributions as a reserve for the Lobos in her freshman campaign ... Appeared in 93 out of a possible 106 sets played on the season ... Fifth on the team in total digs (114) and fifth in assists (20) ... Named to 2010 Academic All-Mountain West Conference Team.

HIGH SCHOOL: New Mexico 3A Player of the Year ... Four-time all-state and all-district ... Played in 2010 New Mexico North-South All-Star Game... New Mexico Juniors team took fourth place at Fiesta Classic ... Was also a star softball player.

PERSONAL: First name is pronounced Mi-kell-ah ... Daughter of Anthony and Theresa Lovato ... Has three sisters, Monica (20), Amber (16) and Analisa (10) ... Sister, Monica, played volleyball and softball at Taft Community College ... Undecided on a major.

Lovato's Career Stats

<u>Year</u>	<u>SP-MP</u>	<u>K</u>	<u>E</u>	<u>TA</u>	<u>Pct.</u>	<u>A</u>	<u>SA</u>	<u>Dig</u>	<u>BS</u>	<u>BA</u>	<u>TB</u>	<u>Pts.</u>
2010	30-4	0	1	5	-.200	20	1	114	0	0	0	1.0
Totals	30-4	0	1	5	-.200	20	1	114	0	0	0	1.0

SOPHOMORE LEXI ROSS



Middle Blocker • 6-2 • Freshman-HS
Lake Oswego, Ore. • Lakeridge HS

6

CAREER SINGLE-MATCH HIGHS

Kills: 7, vs. UC Irvine (9/9/11)
 Attacks: 18, vs. UC Irvine (9/9/11)
 Hitting Percentage: .750, vs. Nebraska (8/27/11)
 Assists: 1, 2 x - last at Northern Arizona (9/3/11)
 Service Aces: n/a
 Digs: 4, - vs. San Jose State (9/3/11)
 Total Blocks: 5, 2x - last vs. UC Irvine (9/9/11)
 Solo Blocks: 1, vs. Sacramento State (9/10/10)
 Block Assists: 5, 2x last vs. UC Irvine (9/9/11)
 Points: 9.5, vs. UC Irvine (9/9/11)

FRESHMAN (2010): Contributed as a reserve middle blocker in her freshman campaign ... Made some significant contributions in the middle portion of the season with her strongest match coming in a 3-1 win over Sacramento State on Sept. 10 where she played in all four sets, recording two kills and had a blocked shot ... Named to 2010 Academic All-Mountain West Conference Team.

HIGH SCHOOL: 2010 graduate of Lakeridge HS in Lake Oswego, Ore. ... Three Rivers League Player of the Year ... Team captain as a senior ... Two time First Team All-League player ... Recipient of multiple Athlete of the Week Honors by The Oswego Review ... Winner of Multnomah Athletic Club Scholar-Athlete of the Year Award as a sophomore ... Three-sport athlete - volleyball, basketball and track & field ... Played club Volleyball with the Athena Volleyball Club ... Was the 2009 Oregon state Javelin Champion ... holds high school records in Javelin and High Jump.

PERSONAL: Daughter of Burl and Valarie Ross ... Has a sister, Katie (23), who played tennis at Southern Oregon and is now a coach/tennis pro in Redding, Calif. ... Plans to major in Art Studio ... Expected to be a two-sport athlete and throw javelin for UNM Track & Field coach Joe Franklin.

Ross' Career Stats												
<u>Year</u>	<u>SP-MP</u>	<u>K</u>	<u>E</u>	<u>TA</u>	<u>Pct.</u>	<u>A</u>	<u>SA</u>	<u>Dig</u>	<u>BS</u>	<u>BA</u>	<u>TB</u>	<u>Pts.</u>
2010	16-9	11	14	54	-.056	0	0	10	3	22	25	25.0
Totals	16-9	11	14	54	-.056	0	0	10	3	22	25	25.0

SOPHOMORE ASHLEY NEWMAN



Outside Hitter • 6-0 • Freshman-HS
Albuquerque, N.M. • St. Pius X HS

18

CAREER SINGLE-MATCH HIGHS

Kills: 8, at Northern Arizona (9/3/11)
 Attacks: 26, vs. San Jose State (9/3/11)
 Hitting Percentage: .625, vs. Hampton (9/2/11)
 Assists: 1, 2x - last vs. UC Irvine (9/9/11)
 Service Aces: 1, 2x - last vs. San Jose State (9/3/11)
 Digs: 3, 2x - last vs. UC Irvine (9/9/11)
 Total Blocks: 3, 2x - last at Wyoming (9/26/09)
 Solo Blocks: 1, 2x - last vs. Portland State (9/10/11)
 Block Assists: 2, 2x - last at Pitt (9/16/11)
 Points: 9.0, vs. San Jose State (9/3/11)

FRESHMAN (2010): Contributed as a reserve outside hitter in her freshman campaign ... Most productive game came in a 0-3 loss to SDSU on Sept. 23, when Newman recorded two kills in five total attempts ... Named to 2010 Academic All-Mountain West Conference Team.

HIGH SCHOOL: First team all-state and all-district ... District Player of the Year ... All-academic ... North-South All-Star ... New Mexico Juniors teammate of Miquella Lovato ... Team placed fourth at Fiesta Classic ... National Honor Society.

PERSONAL: Daughter of Tony and Jacque Newman ... Has a brother, Stephen (15) ... Undecided on a major ... enjoys playing piano.

Newman's Career Stats

<u>Year</u>	<u>SP-MP</u>	<u>K</u>	<u>E</u>	<u>TA</u>	<u>Pct.</u>	<u>A</u>	<u>SA</u>	<u>Dig</u>	<u>BS</u>	<u>BA</u>	<u>TB</u>	<u>Pts.</u>
2010	17-0	2	9	22	-.318	0	0	3	0	3	3	0.17
Totals	17-0	2	9	22	-.318	0	0	3	0	3	3	0.17

LOBO NEWCOMERS



3

CHANTALE RIDDLE

Middle Blocker • 6-0
• RS Freshman-HS
Roswell, N.M. • Roswell HS

FRESHMAN (2010): Redshirted the 2010 season.

HIGH SCHOOL: Three-sport all-state performer in volleyball, basketball, and track & field ... First team volleyball all-state, first team all-district and District 4-4A Co-MVP in 2008 ... Named 2009 Class 3A-4A South All-Star ... Roswell volleyball team won 4A state title in 2006, runner-up in 2007 and semifinalist in 2008 ... Also all-state basketball player for 2009 state runner-up Coyotes ... In 2008, set the 4A state record in long jump - 18' 2.5", earning all-state honors.



7

CARA FISHER

Defensive Specialist • 5-3
• Freshman-HS
Manvel, Texas • Manvel HS

HIGH SCHOOL: Was named First-Team All-District 24-4A in 2009 and 2010 ... Named 2nd Team All-County (Brazoria County) in 2009 ... Earned Defensive Player of the Year in 24-4A district and Libero of the Year in Brazoria County in 2008.

SUMMER/CLUB TEAM: Most recently played for the Texas Tornados 17 Mizuno and participated in the Junior Olympics.

PERSONAL: Born in Clear Lake, Texas ... Daughter of Don and Sherri Musslewhite ... Has an older brother, Codie (25) and an older sister, Crissa (21) ... Brother Cody played basketball at Mid-America Christian University (2004-09) ... Enjoys playing all sports and being outdoors ... Favorite athlete is Michael Jordan.



2

HANNAH JOHNSON

Setter • 5-11 • Freshman-HS
Longview, Wash. • R.A. Long HS

HIGH SCHOOL: Named the 2010 Greater St. Helen's Conference Volleyball Player of the Year (MVP) ... Named to the Washington All-State Volleyball team ... Selected to the

Greater St. Helen's All-Conference First Team in 2009 ... Chosen to the Greater St. Helen's All-Conference Second-Team in 2008 ... Helped her team qualify for the Washington State Volleyball Tournament in 2009 ... Also lettered in basketball and tennis and qualified for Washington State Double's Tennis Tournament in 2010 and 2011.

SUMMER/CLUB TEAM: Played for coach Bill Marshal on the Cowlitz Volleyball Club in Washington ... Was selected as team MVP.

PERSONAL: Daughter of Rich and Anne Johnson ... Has a younger brother Ethan (16) ... Plans to study Exercise Science/Physical Therapy ... Enjoys outdoor activities, biking, hiking, watching sports and spending time with family and friends ... Mother, Anne, played volleyball at the University of Portland (1984-88).



16

ELSA KRIEG

Middle Blocker • 6-2
• Freshman-HS
Granby, Colo. • Middle Park HS

HIGH SCHOOL: Named Frontier League MVP three years in a row ('08, '09 '10) ... Earned 3A All-State

Second Team in 2009 ... Named 3A All-State Honorable Mention in 2008 ... Was a Metro League Honorable Mention in 2007 ... Also lettered in track and field, placing at the state championships.

SUMMER/CLUB TEAM: Won multiple regional championships for the Colorado Juniors Club team (2006-11) and was named to the All Rocky Mountain Region Team four times.

PERSONAL: Born in Fort Collins, Colo., to Mark and Jennifer Krieg ... Has an older brother, Trevor (25) ... Plans to study Athletic Training ... Father Mark played basketball at the University of Great Falls in Montana ... Hobbies include wakeboarding, snowmobiling, horseback riding and camping.

LOBO NEWCOMERS



20

CHELSEA MCCAMPBELL

*Middle Blocker • 6-2 • Freshman-HS
Rio Rancho, N.M. • Rio Rancho HS*

HIGH SCHOOL: Helped lead Rio Rancho HS to the New Mexico State Championship in 2009 ... Earned All-District Honorable Mention honors and All-Metro Academic honors while at Rio Rancho.

SUMMER/CLUB TEAMS: Played for New Mexico Juniors and made it to Nationals.

PERSONAL: Born in Pittsburgh, Pa., to Roseanne McCampbell ... Has seven siblings, Devin (21), April (19), Gabby (16), Sarah (15), Joey (14), Jacob (10), Angel-David (7).



12

MEGAN SHORT

*Middle Blocker • 6-3 • Freshman-HS
Arlington, Texas • Lamar HS*

HIGH SCHOOL: Finished her career as the all time block assists leader at Lamar HS ... Was named first team All-District all three years she played on the varsity squad ... Named District 4-5A blocker of the year her senior season ... Selected to the 2011 Fort Worth Star Telegram Super Team ... Was a TGCA Alternate East West All Star in 2011.

SUMMER/CLUB TEAM: Played on Ping Cao's TAV 17 VBRags team that claimed the 17 Open National Championship in 2010.

PERSONAL: Born in San Marcos, Texas, to Colin and Emily Short ... Has a younger brother, Austin (15) ... Her father Colin fenced at the NJCAA level and her mother Emily played tennis at the NJCAA level ... Hobbies include drawing, painting, sewing, running, reading, cooking and watching movies.



11

JAYLA TROMBLEY

*Outside Hitter • 5-10 • Freshman-HS
Rio Rancho, N.M. • Rio Rancho HS*

HIGH SCHOOL: Helped lead Rio Rancho HS to two championships in 2007 and 2009, playing along side current Lobos teammates Ashley Rhaodes (2007) and Chelsea McCampbell (2009) ... Received all sorts of recognition her senior season being named the Metro Player of the year, First team All-District, First Team All-State and First Team All-Metro ... She was selected to the All-Tournament team at Margret the Hussman Tournament of Champions and was named to the Under Armor Girls High school All American watch list (Only New Mexico player on the list along with UNM Freshman Elsa Krieg) ... Earned First Team All-State, All-Metro, All-District and Albuquerque Journal All-Metro Team her junior season ... Named All-State Honorable Mention and All-District First Team her sophomore season.

SUMMER/CLUB TEAM: Played for New Mexico Juniors Club team from 2009-11 ... Competed in Junior Nationals with teammate Chelsea McCampbell.

PERSONAL: Born in Albuquerque, N.M., to Steve and Stevie Harvey ... Has a younger sibling, Shaudai (16) ... Enjoys snowboarding, singing and playing the piano ... Favorite food is enchiladas and all types of cereal.

2011 LOBO ROSTER

2011 UNM Lobos Volleyball Roster

Numerical

No.	Name	Pos.	Ht.	Yr./Exp.	Hometown/Last School
1	Mariah Agre	S	5-10	So./1L	Lake Elsinore, Calif./Elsinore HS
2	Hannah Johnson	S	5-11	Fr./HS	Longview, Wash./R.A. Longview HS
3	Chantale Riddle	MB	6-0	Fr./RS	Roswell, N.M./Roswell HS
4	Ashley Rhoades	MB	5-11	Sr./2L	Rio Rancho, N.M./Rio Rancho HS
5	Jordan Russell	S	5-8	Jr./2L	Stanley, N.M./Moriarty HS
6	Lexi Ross	MB	6-2	So./1L	Lake Oswego, Ore./Lakeridge HS
7	Cara Fisher	DS	5-3	Fr./HS	Manvel, Texas/Manvel HS
8	Allison Buck	LIB	5-7	Sr./3L	Camas, Wash./Camas HS
11	Jayla Trombley	OH	5-10	Fr./HS	Rio Rancho, N.M./Rio Rancho HS
12	Megan Short	MB	6-3	Fr./HS	Arlington, Texas/Lamar HS
13	Kelly Williamson	OH	6-2	Sr./3L	Buenos Aires, Argentina/Lincoln International School
16	Elsa Krieg	MB	6-2	Fr./HS	Granby, Colo./Middle Park HS
18	Ashley Newman	OH	6-0	So./1L	Albuquerque, N.M./St. Pius X HS
20	Chelsea McCampbell	MB	6-2	Fr./HS	Rio Rancho, N.M./Rio Rancho HS
21	Miquella Lovato	L/DS	5-2	So./HS	Pojoaque, N.M./Pojoaque HS

Alphabetical

No.	Name	Pos.	Ht.	Yr./Exp.	Hometown/Last School
1	Mariah Agre	S	5-10	So./1L	Lake Elsinore, Calif./Elsinore HS
8	Allison Buck	LIB	5-7	Sr./3L	Camas, Wash./Camas HS
7	Cara Fisher	DS	5-3	Fr./HS	Manvel, Texas/Manvel HS
2	Hannah Johnson	S	5-11	Fr./HS	Longview, Wash./R.A. Longview HS
16	Elsa Krieg	MB	6-2	Fr./HS	Granby, Colo./Middle Park HS
21	Miquella Lovato	L/DS	5-2	So./HS	Pojoaque, N.M./Pojoaque HS
20	Chelsea McCampbell	MB	6-2	Fr./HS	Rio Rancho, N.M./Rio Rancho HS
18	Ashley Newman	OH	6-0	So./1L	Albuquerque, N.M./St. Pius X HS
4	Ashley Rhoades	MB	5-11	Sr./2L	Rio Rancho, N.M./Rio Rancho HS
3	Chantale Riddle	MB	6-0	Fr./RS	Roswell, N.M./Roswell HS
6	Lexi Ross	MB	6-2	So./1L	Lake Oswego, Ore./Lakeridge HS
5	Jordan Russell	S	5-8	Jr./2L	Stanley, N.M./Moriarty HS
12	Megan Short	MB	6-3	Fr./HS	Arlington, Texas/Lamar HS
11	Jayla Trombley	OH	5-10	Fr./HS	Rio Rancho, N.M./Rio Rancho HS
13	Kelly Williamson	OH	6-2	Sr./3L	Buenos Aires, Argentina/Lincoln International School

Head Coach: Jeff Nelson (5th season, 18th overall)

Assistant Coach: Lisa Beauchene (6th season)

Assistant Coach: Ben Wallis (1st season)

Volunteer Assistant Coach: Doug Manning (2nd season)

Director of Operations: Jordie Hadfield (4th season)

Student Assistant Coach: Taylor Hadfield (1st season)

Lobo League Director: Dave Buchholz (10th season)

Athletics Trainers: Carlos Gual (GA, 2nd season), David Manning (GA, 1st season)

As of Aug. 10, 2011

2011 LOBO ROSTER



1
MARIAH AGRE
5-10 • S • So.
San Diego, Calif.
Elsinore HS



2
HANNAH JOHNSON
5-11 • S • Fr.
Longview, Wash.
R.A. Long HS



3
CHANTALE RIDDLE
6-0 • MB • Fr.
Roswell, N.M.
Roswell HS



4
ASHLEY RHOADES
5-11 • MB • Sr.
Rio Rancho, N.M.
Rio Rancho HS



5
JORDAN RUSSELL
5-8 • S • Jr.
Stanley, N.M.
Moriarty HS



6
LEXI ROSS
6-2 • MB • So.
Lake Oswego, Ore.
Lakeridge HS



7
CARA FISHER
5-3 • DS • Fr.
Manvel, Texas
Manvel HS



8
ALLISON BUCK
5-7 • L • Sr.
Camas, Wash.
Camas HS



11
JAYLA TROMBLY
5-10 • OH • Fr.
Rio Rancho, N.M.
Rio Rancho HS



12
MEGAN SHORT
6-3 • MB • Fr.
Arlington, Texas
Lamar HS



13
KELLY WILLIAMSON
6-2 • OH • Sr.
Buenos Aires, Argentina
Lincoln International School



16
ELSA KRIEG
6-2 • MB • Fr.
Granby, Colo.
Middle Park HS



18
ASHLEY NEWMAN
6-0 • OH • So.
Albuquerque, N.M.
St. Pius X HS



20
CHELSEA MCCAMPBELL
6-2 • MB • Fr.
Rio Rancho, N.M.
Rio Rancho HS



21
MIQUELLA LOVATO
5-2 • L/DS • So.
Pojoaque, N.M.
Pojoaque HS



JEFF NELSON
Head Coach
5th Season



BEN WALLIS
Assistant Coach
1st Season



LISA BEAUCHENE
Assistant Coach
6th Season



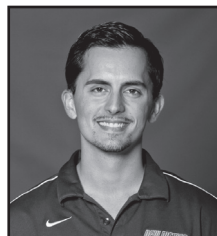
DOUG MANNING
Volunteer Assistant
2nd Season



TAYLOR HADFIELD
Student Asst. Coach
1st Season



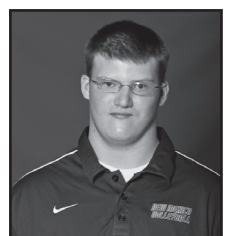
JORDIE HADFIELD
Director of Operations
4th Season



CARLOS GUAL
Athletic Trainer
2nd Season



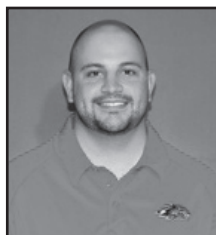
DAVE MANNING
Athletic Trainer
1st Season



JEFF WEED
Team Manager
1st Season



JOAQUIN CHAVEZ
Strength Coach
15th Season



ANDREW WOERPEL
Communications
1st Season



2011 BOX SCORES

Volleyball Box Score USF vs New Mexico (Aug 26, 2011 at Albuquerque, N.M.)

#	USF	S	Attack				Pct	Ast	Serve			Block				Pts	
			K	E	TA	TA			SA	SE	RE	Dig	BS	BA	BE		BH
3	DAVIS, J'beria	4	17	7	41	.244	0	0	0	2	8	0	2	0	0	0	-
9	ROZIER, Kimika	4	7	2	19	.263	1	0	1	0	1	0	3	0	0	0	-
11	WALTON, Kayla	4	7	7	27	.000	0	0	0	1	1	1	7	1	0	0	-
16	RODRIGUEZ GOMEZ, And	4	3	4	11	-.091	0	0	1	0	1	2	0	7	0	0	-
18	EL HOUSSINE, Valerie	4	7	9	29	-.069	2	0	2	0	11	1	2	3	0	0	-
20	BURGHART, Jessica	4	2	2	9	.000	32	2	1	0	8	0	1	0	1	-	
1	RIVERA, Janice	4	0	0	0	.000	6	1	3	1	15	0	0	0	0	-	
2	BREEN, Caitlyn	2	0	1	4	-.250	0	0	2	1	1	2	0	0	0	-	
6	CABRERA, Claudia	4	1	0	1	1.000	1	0	0	1	9	0	0	0	0	-	
Totals		4	44	32	141	.085	42	3	8	7	56	3	24	4	1	-	

Team Attack By Set

Set	K	E	TA	Pct
1	17	10	47	.149
2	5	7	31	-.065
3	9	8	26	.038
4	13	7	37	.162

TOTAL TEAM BLOCKS: 15.0

SET SCORES

	1	2	3	4	Team Records:
USF (1)	29	19	19	21	0-1
New Mexico (3)	27	25	25	25	1-0

#	New Mexico	S	Attack				Pct	Ast	Serve			Block				Pts
			K	E	TA	TA			SA	SE	RE	Dig	BS	BA	BE	
1	AGRE, Mariah	4	3	0	9	.333	42	2	2	0	8	0	0	0	1	-
4	RHOADES, Ashley	4	14	4	28	.357	0	1	3	0	5	1	1	0	0	-
6	ROSS, Lexi	4	6	2	14	.286	0	0	0	0	1	0	5	1	0	-
7	FISHER, Cara	4	0	0	0	.000	1	1	2	1	13	0	0	0	0	-
13	WILLIAMSON, Kelly	4	19	11	56	.143	2	0	5	0	7	0	3	0	0	-
21	LOVATO, Miquella	4	0	0	0	.000	0	0	1	0	4	0	0	0	0	-
3	RIDDLE, Chantale	4	6	4	23	.087	0	0	0	0	0	2	0	0	0	-
8	BUCK, Allison	4	0	0	2	.000	2	2	0	2	13	0	0	0	0	-
18	NEWMAN, Ashley	4	5	5	20	.000	1	1	1	0	2	0	1	0	0	-
Totals		4	53	26	152	.178	48	7	14	3	53	1	12	1	1	-

Team Attack By Set

Set	K	E	TA	Pct
1	12	9	49	.061
2	17	6	39	.282
3	12	6	27	.222
4	12	5	37	.189

TOTAL TEAM BLOCKS: 7.0

Site: Albuquerque, N.M. (Johnson Center)

Date: Aug 26, 2011 Attend: 1879 Time: 1:56

Referees: Cedric All Runner, Kim Pickring

Volleyball Box Score #5 Nebraska vs New Mexico (Aug 27, 2011 at Albuquerque, N.M.)

#	Nebraska	S	Attack				Pct	Ast	Serve			Block				Pts
			K	E	TA	TA			SA	SE	RE	Dig	BS	BA	BE	
1	Dykstra, Lara	3	11	2	23	.391	0	0	3	0	8	2	1	0	0	-
2	Cook, Lauren	3	8	3	19	.263	0	0	0	0	0	0	4	0	0	-
3	Root, Brigitte	3	10	5	28	.179	2	0	3	0	4	0	4	0	0	-
4	Winkelmann, Shelby	3	6	3	14	.214	0	0	0	0	0	0	3	0	1	-
5	Hubl, Paige	3	10	3	21	.333	0	1	0	0	0	0	2	1	0	-
6	Wilberger, Jordan	3	0	0	0	.000	1	0	0	0	9	0	0	0	0	-
9	Hall, Cecilia	3	0	0	0	.000	0	0	1	0	1	0	0	0	0	-
43	Simpson, Taylor	2	1	0	1	1.000	0	0	0	0	0	0	0	1	0	-
Totals		3	46	16	108	.278	43	1	8	0	43	3	15	2	2	-

Team Attack By Set

Set	K	E	TA	Pct
1	17	4	39	.333
2	15	7	34	.235
3	14	5	35	.257

TOTAL TEAM BLOCKS: 10.5

SET SCORES

	1	2	3	4	Team Records:
Nebraska (3)	25	25	25	2	2-0
New Mexico (0)	16	17	17	1	1-1

#	New Mexico	S	Attack				Pct	Ast	Serve			Block				Pts
			K	E	TA	TA			SA	SE	RE	Dig	BS	BA	BE	
1	AGRE, Mariah	3	2	0	4	.500	20	0	1	0	8	0	0	0	0	-
3	RIDDLE, Chantale	3	2	2	12	.000	0	0	0	0	1	0	1	0	0	-
4	RHOADES, Ashley	3	9	6	28	.107	0	0	1	0	1	1	0	0	0	-
6	ROSS, Lexi	3	3	0	4	.750	0	0	0	0	0	0	1	0	0	-
13	WILLIAMSON, Kelly	3	6	8	33	-.061	0	0	1	0	8	0	0	0	0	-
18	NEWMAN, Ashley	2	2	0	11	.182	0	2	0	2	0	0	0	0	1	0
5	RUSSELL, Jordan	1	0	0	0	.000	0	0	0	0	0	0	0	0	0	-
7	FISHER, Cara	3	0	0	0	.000	0	2	0	2	0	0	0	0	0	-
8	BUCK, Allison	3	0	0	1	.000	3	0	0	1	12	0	0	0	0	-
11	TROMBLEY, Jayla	1	0	0	1	.000	0	0	0	0	0	0	0	0	0	-
16	KRIEG, Elsa	1	0	3	5	-.600	0	0	0	0	1	0	0	0	0	-
21	LOVATO, Miquella	3	0	0	0	.000	0	0	0	0	5	0	0	0	0	-
Totals		3	24	19	99	.051	23	0	7	1	38	1	2	1	0	-

Team Attack By Set

Set	K	E	TA	Pct
1	8	4	39	.103
2	8	8	27	.000
3	8	7	33	.030

TOTAL TEAM BLOCKS: 2.0

Site: Albuquerque, N.M. (Johnson Center)

Date: Aug 27, 2011 Attend: 4112 Time: 1:22

Referees: Kim Pickring, Lisa Roberts

Volleyball Box Score The Automated ScoreBook Hampton vs New Mexico (Sep 02, 2011 at Flagstaff, Ariz.)

#	Hampton	S	Attack				Pct	Ast	Serve			Block				Pts
			K	E	TA	TA			SA	SE	RE	Dig	BS	BA	BE	
2	ARMSTRONG, Mianna	3	1	7	23	-.261	0	0	0	1	4	0	1	0	0	-
6	ELKAYAM, Lili	2	0	1	2	-.500	1	0	0	0	0	0	0	0	0	-
10	KALFINOVA, Ioana	3	4	3	13	.077	1	0	0	2	4	0	0	0	0	-
11	PARRROS, Petra	1	0	0	1	.000	0	0	0	0	1	0	0	0	0	-
13	PAGAN, Sheileen	3	7	6	24	.042	0	0	5	0	3	0	1	0	0	-
18	CADAVID, Ornela	3	1	2	8	-.125	0	0	4	0	0	0	1	0	0	-
1	KRASKURA, Krista	1	0	0	0	.000	0	0	0	0	1	0	0	0	0	-
5	PETROVIC, Andjela	1	0	0	0	.000	0	0	0	0	1	0	0	0	0	-
8	CHAVEZ, Juliana	2	0	1	6	-.167	9	0	2	0	3	0	1	0	0	-
14	BAYLOR, Mariah	2	1	0	5	.200	0	0	1	0	0	1	0	0	0	-
20	HILL, Brittany	3	0	1	1	-.000	0	0	0	1	3	0	0	0	0	-
Team											4					-
Totals		3	14	21	84	-.083	11	0	12	8	20	0	6	0	0	-

Team Attack By Set

Set	K	E	TA	Pct
1	2	7	22	-.227
2	5	7	30	-.067
3	7	7	32	.000

TOTAL TEAM BLOCKS: 3.0

SET SCORES

	1	2	3	4	Team Records:
Hampton (0)	9	11	14	1	1-2
New Mexico (3)	25	25	25	1	1-1

#	New Mexico	S	Attack				Pct	Ast	Serve			Block				Pts
			K	E	TA	TA			SA	SE	RE	Dig	BS	BA	BE	
1	AGRE, Mariah	3	3	0	3	1.000	20	3	0	0	13	0	1	0	0	-
3	RIDDLE, Chantale	2	3	2	12	.083	0	0	0	0	2	0	3	1	0	-
4	RHOADES, Ashley	3	7	3	15	.267	0	2	2	0	1	0	3	1	0	-
6	ROSS, Lexi	3	4	1	8	.375	1	0	0	0	1	0	4	2	0	-
13	WILLIAMSON, Kelly	3	6	2	16	.250	1	0	2							

2011 BOX SCORES

Volleyball Box Score The Automated ScoreBook New Mexico vs Northern Arizona (Sep 03, 2011 at Flagstaff, Ariz.)

#	New Mexico	Attack				Ast	Serve			Block				Pts		
		S	K	E	TA		Pct	SA	SE	RE	Dig	BS	BA		BE	BH
1	AGRE, Mariah	5	2	1	8	.125	57	1	1	0	11	0	0	0	1	-
3	RIDDLE, Chantale	5	6	3	17	.176	0	0	0	2	0	4	0	0	-	-
4	RHOADES, Ashley	5	25	5	59	.339	0	0	2	6	1	4	0	0	-	-
6	ROSS, Lexi	5	6	5	17	.059	1	0	0	1	0	3	2	0	-	-
13	WILLIAMSON, Kelly	5	19	15	68	.059	0	0	1	10	0	2	0	0	-	-
18	NEWMAN, Ashley	5	8	7	23	.043	0	0	0	3	0	1	0	0	-	-
7	FISHER, Cara	5	0	0	0	.000	1	0	1	7	0	0	0	0	-	-
8	BUCK, Allison	5	1	0	1	1.000	2	2	0	1	24	0	0	0	0	-
21	LOVATO, Miquella	5	0	0	0	.000	1	1	1	11	0	0	0	0	-	-
Totals		5	67	36	193	.161	62	4	6	3	75	1	14	2	1	-

Team Attack By Set

Set	K	E	TA	Pct
1	12	7	41	.122
2	15	12	52	.058
3	15	3	34	.353
4	15	7	41	.195
5	10	7	25	.120

SET SCORES

	1	2	3	4	5	Team Records:
New Mexico (2)	17	25	25	25	13	3-2
Northern Arizona (3)	25	27	17	22	15	6-0

TOTAL TEAM BLOCKS: 8.0

#	Northern Arizona	Attack				Ast	Serve			Block				Pts		
		S	K	E	TA		Pct	SA	SE	RE	Dig	BS	BA		BE	BH
1	SCHROEDER, Lexie	5	0	0	1	.000	0	0	1	2	10	0	0	0	0	-
5	DALLMANN, Kelli	5	2	0	7	.286	52	0	5	0	9	0	4	0	1	-
7	BAILEY, Katie	5	8	4	25	.160	0	1	0	0	3	1	4	1	1	-
9	KIRBY, Kalee	5	0	0	0	.000	1	0	2	0	10	0	0	0	0	-
11	KEMPER, Sydney	5	10	4	20	.300	0	0	0	4	0	7	1	0	-	-
13	CHRISTENSEN, Kobi	5	23	7	63	.254	1	0	0	0	7	0	3	1	0	-
2	GOTT, Anna	5	0	0	3	.000	2	0	1	0	16	0	0	0	0	-
3	SULLIVAN, Lexi	5	7	3	23	.174	0	2	3	1	5	0	1	0	0	-
14	WILSON, Jen	5	10	2	28	.286	0	0	0	1	0	3	1	0	-	-
Team										1						-
Totals		5	60	20	170	.235	56	3	12	4	65	1	22	4	2	-

Team Attack By Set

Set	K	E	TA	Pct
1	16	2	28	.500
2	13	5	43	.186
3	12	5	45	.156
4	11	5	31	.194
5	8	3	23	.217

Site: Flagstaff, Ariz. (Rolle Activity Cen)
Date: Sep 03, 2011 Attend: 473 Time: 2:15
Referees: John Martin, Larry Neidich
Fiesta Bowl Tournament Match Six

TOTAL TEAM BLOCKS: 12.0

Volleyball Box Score The Automated ScoreBook UCI vs New Mexico (Sep 09, 2011 at Albuquerque, N.M.)

#	UCI	Attack				Ast	Serve			Block				Pts		
		S	K	E	TA		Pct	SA	SE	RE	Dig	BS	BA		BE	BH
1	Hauser, Alexandra	5	11	3	34	.235	0	1	3	0	4	0	4	0	0	-
5	Squires, Aly	5	14	10	66	.061	1	2	1	0	12	1	2	3	0	-
11	Carls, Mary	5	1	1	7	.000	42	1	1	0	16	0	0	2	1	-
15	Yoder, Molly	5	0	0	0	.000	0	0	0	0	12	0	0	0	0	-
17	Acres, Pauline	5	3	3	21	.000	1	0	1	0	10	1	5	1	0	-
18	Fleming, Shannon	5	10	7	25	.120	0	0	0	0	2	1	4	0	0	-
6	Nabbout, Hannah	1	0	0	0	.000	0	0	0	0	0	0	0	0	0	-
7	Alvarez, Marissa	2	0	0	1	.000	1	0	0	0	2	0	0	0	0	-
8	Winkler, Kristin	5	0	0	0	.000	5	1	1	0	31	0	0	0	0	-
10	Olsen, Shaina	3	2	9	23	.304	0	0	0	0	1	0	1	0	0	-
16	Smith, Taylor	4	10	2	28	.286	0	0	0	0	0	0	1	0	0	-
42	Manz, Arielle	1	0	0	0	.000	0	0	0	0	0	0	0	0	0	-
Totals		5	51	35	205	.078	50	5	7	0	90	3	17	6	1	-

Team Attack By Set

Set	K	E	TA	Pct
1	6	11	35	.143
2	15	2	42	.310
3	11	10	55	.018
4	13	8	41	.122
5	6	4	32	.062

SET SCORES

	1	2	3	4	5	Team Records:
UCI (2)	15	25	15	25	9	3-4
New Mexico (3)	25	22	25	20	15	4-2

TOTAL TEAM BLOCKS: 11.5

#	New Mexico	Attack				Ast	Serve			Block				Pts		
		S	K	E	TA		Pct	SA	SE	RE	Dig	BS	BA		BE	BH
1	AGRE, Mariah	5	2	0	9	.222	52	0	1	0	20	0	1	0	1	-
3	RIDDLE, Chantale	5	12	4	36	.222	0	0	0	1	1	7	1	0	0	-
4	RHOADES, Ashley	5	26	7	55	.345	0	0	0	0	4	2	4	0	1	-
6	ROSS, Lexi	5	7	2	18	.278	0	0	0	0	3	0	5	1	0	-
13	WILLIAMSON, Kelly	5	12	8	56	.071	0	0	1	2	12	0	1	1	0	-
18	NEWMAN, Ashley	5	4	2	18	.111	1	0	3	0	3	0	0	0	0	-
5	RUSSELL, Jordan	2	0	0	0	.000	0	0	0	0	0	0	0	0	0	-
7	FISHER, Cara	5	0	0	0	.000	2	0	1	3	13	0	0	0	0	-
8	BUCK, Allison	5	0	0	2	.000	3	0	0	0	34	0	0	0	0	-
21	LOVATO, Miquella	5	0	0	0	.000	1	0	0	0	15	0	0	0	0	-
Totals		5	63	23	194	.206	59	0	6	5	105	3	18	3	2	-

Team Attack By Set

Set	K	E	TA	Pct
1	11	4	30	.233
2	18	6	46	.261
3	13	3	49	.204
4	10	8	43	.047
5	11	2	26	.346

Site: Albuquerque, N.M. (Johnson Center)
Date: Sep 09, 2011 Attend: 2192 Time: 2:11
Referees: Tom Givens, Lisa Roberts

TOTAL TEAM BLOCKS: 12.0

Volleyball Box Score The Automated ScoreBook PSU vs New Mexico (Sep 10, 2011 at Albuquerque, N.M.)

#	PSU	Attack				Ast	Serve			Block				Pts		
		S	K	E	TA		Pct	SA	SE	RE	Dig	BS	BA		BE	BHE
4	O'BRIEN, Katie	3	2	5	11	-.273	0	0	0	0	0	2	0	0	0	-
6	MITCHELL, Aubrey	1	2	2	5	.000	0	0	0	1	0	0	0	0	0	-
13	ELLIS, Megan	3	8	4	21	.190	0	0	0	1	2	0	0	0	0	-
18	CORRADO, Cheyenne	3	6	3	23	.130	0	0	2	1	8	0	0	1	0	-
23	SCHLATTER, Garyn	3	4	3	15	.067	12	1	1	0	3	0	1	0	0	-
24	HAATAJA, Leigh-Ann	1	0	2	3	-.667	0	0	0	0	0	0	0	0	0	-
1	CLARK, Kasimira	2	0	0	0	.000	0	0	0	0	0	0	0	0	0	-
2	DEMOTS, Anna	1	0	2	2	-1.000	0	0	0	0	0	1	0	0	0	-
9	PATTON, Kaeli	2	1	6	13	-.385	0	0	0	0	0	0	0	0	0	-
10	BATEHAM, Nicole	3	0	0	0	.000	1	0	0	3	11	0	0	0	0	-
11	OLDEN, Cara	2	3	0	5	.600	0	0	0	0	0	0	0	0	0	-
12	KRISTINIKOVA, Domi	3	0	0	0	.000	10	0	0	0	2	0	0	0	2	-
22	BIERMA, Tineke	1	1	3	8	-.250	0	0	0	0	0	2	1	0	0	-
Totals		3	27	30	106	-.028	23	1	3	5	27	0	6	2	2	-

Team Attack By Set

Set	K	E	TA	Pct
1	7	12	36	-.139
2	8	12	39	-.103
3	12	6	31	.194

SET SCORES

	1	2	3	Team Records:
PSU (0)	8	14	16	4-6
New Mexico (3)	25	25	25	5-2

TOTAL TEAM BLOCKS: 3.0

#	New Mexico	Attack				Ast	Serve			Block				Pts		
		S	K	E	TA		Pct	SA	SE	RE	Dig	BS	BA		BE	BHE
1	AGRE, Mariah	3	2	0	5	.400	27	0	0	0	5	0	4	2	0	-
3	RIDDLE, Chantale	3	6	0	11	.545	0	0	0	0	0	2	0	0	0	-
4	RHOADES, Ashley	3	12	2	25	.400	0	2	0	0	2	1	4	0	0	-
6	ROSS, Lexi	2	0	0	0	.000	0	0	0	0	0	0	0	0	0	-
13	WILLIAMSON, Kelly	3	7	3	21	.190	0	0	1	1	5	0	1	0	0	-
18	NEWMAN, Ashley	2	3	0	7	.429	0	0	0	0	1	0	0	0	0	-
5	RUSSELL, Jordan	1	0	0	0	.000	1	0	0	0	0	0	0	0	0	-
7	FISHER, Cara	3	0	0	0	.000	1	1	0	0	6	0	0	0	0	-
8	BUCK, Allison	3	0	0	0	.000	4	1	0	0	15	0	0	0	0	-
11	TROMBLEY, Jayla	2	0	2	5	-.400	0	0	0	0	1	0	0	0	0	-
16	KRIEG, Elisa	2	4	1	8	.375	0	0	0	0	0	0	3	1	0	-
21	LOVATO, Miquella	3	0	0	0	.000	0	0	0	0	5	0	0	0	0	-
Totals		3	34	8	82	.317	32	5	1	1	39	2	14	3	0	-

Team Attack By Set

Set	K	E	TA	Pct
1	9	1	22	.364
2	13	4		

2011 BOX SCORES

Volleyball Box Score The Automated ScoreBook New Mexico vs PITT (Sep 16, 2011 at Pittsburgh, PA)

#	New Mexico	Attack				Serve			Block				Pts			
		S	K	E	TA	Pct	Ast	SA	SE	RE	Dig	BS		BA	BE	BH
1	AGRE, Mariah	5	2	1	6	.167	50	0	0	0	9	1	2	0	1	-
3	RIDDLE, Chantale	5	6	2	28	.143	0	0	0	0	1	0	0	0	0	-
4	RHOADES, Ashley	5	25	5	53	.377	0	1	0	0	9	0	4	0	1	-
6	ROSS, Lexi	5	6	4	15	.133	0	0	0	0	1	0	2	0	0	-
13	WILLIAMSON, Kelly	5	14	7	50	.140	1	0	1	3	11	2	1	0	0	-
18	NEWMAN, Ashley	5	6	3	12	.250	0	0	0	0	2	0	2	0	0	-
7	FISHER, Cara	5	0	0	0	.000	0	2	2	0	15	0	0	0	0	-
8	BUCK, Allison	5	0	0	1	.000	3	1	0	0	24	0	0	0	0	-
11	TROMBLEY, Jayla	1	1	0	5	.200	0	0	0	0	0	0	0	0	0	-
16	KRIEG, Elsa	1	0	0	0	.000	0	0	0	0	0	0	1	0	0	-
21	LOVATO, Miquella	5	0	0	0	.000	1	1	1	0	16	0	0	0	0	-
Totals		5	60	22	170	.224	55	5	4	3	88	3	12	0	2	-

Team Attack By Set

Set	K	E	TA	Pct
1	14	4	32	.312
2	11	2	29	.310
3	12	4	38	.211
4	15	8	51	.137
5	8	4	20	.200

SET SCORES

	1	2	3	4	5	Team Records:
New Mexico (2)	25	25	24	13	5-3	
PITT (3)	19	18	26	26	15	10-3

TOTAL TEAM BLOCKS: 9.0

#	PITT	Attack				Serve			Block				Pts			
		S	K	E	TA	Pct	Ast	SA	SE	RE	Dig	BS		BA	BE	BH
2	CLESEN, Delaney	5	0	0	1	.000	0	0	2	2	7	0	0	0	0	-
5	ZITZKE, Lindsey	5	3	3	12	.000	57	0	1	0	8	0	0	0	1	-
11	WHITE, Brenea	5	6	2	11	.364	0	0	0	0	0	0	3	1	0	-
17	DITTRICH, Jasmine	5	7	2	24	.208	0	0	4	0	2	0	4	0	0	-
19	LEGG, Klesha	5	16	10	45	.133	0	0	0	0	4	1	3	0	0	-
24	WIGNOT, Monica	5	23	7	60	.267	1	3	4	0	12	0	1	0	0	-
7	GUESS, Mechael	5	17	4	40	.325	1	0	0	0	4	0	3	0	0	-
12	ACTON, Margy	5	0	0	2	.000	8	0	4	1	27	0	0	0	0	-
14	CAMPBELL, Alexa	5	0	0	0	.000	1	0	0	2	11	0	0	0	0	-
18	NICHOLAS, Maria	4	0	0	0	.000	1	0	0	0	0	0	0	0	0	-
Totals		5	72	28	195	.226	69	3	15	5	75	1	14	1	1	-

Team Attack By Set

Set	K	E	TA	Pct
1	12	5	34	.206
2	14	6	37	.216
3	20	8	55	.218
4	18	6	50	.240
5	8	3	19	.263

Site: Pittsburgh, PA (Fitzgerald FH)
Date: Sep 16, 2011 Attend: 339 Time: 2:20
Referees: Steve Grabowski, Patti Nelis

TOTAL TEAM BLOCKS: 8.0

Volleyball Box Score The Automated ScoreBook Delaware vs New Mexico (Sep 17, 2011 at Pittsburgh, PA)

#	Delaware	Attack				Serve			Block				Pts			
		S	K	E	TA	Pct	Ast	SA	SE	RE	Dig	BS		BA	BE	BH
2	Hank, Katie	4	14	1	40	.325	0	0	1	1	17	0	0	0	0	14.0
4	Tomko, Renee	4	1	0	4	.250	39	0	2	0	14	0	0	1	0	1.0
7	Stewart, Kim	4	8	7	56	.018	2	0	0	1	18	0	3	0	0	9.5
12	Alker, Alissa	4	12	9	48	.062	0	0	1	2	13	1	3	0	0	14.5
13	Lawrence, Chelsea	4	6	3	27	.111	0	0	0	0	4	0	4	0	0	8.0
14	Evans, Karina	4	5	2	12	.250	0	0	1	0	5	2	2	1	0	8.0
1	Rosehill, Cara	4	0	0	1	.000	3	0	0	2	24	0	0	0	0	0.0
8	Reigel, Kori	1	0	0	1	.000	0	0	0	0	0	0	0	0	0	0.0
11	Oemcke, Rachel	1	0	0	0	.000	0	0	0	0	0	0	0	0	1	0.0
Totals		4	46	22	189	.127	44	0	5	6	95	3	12	2	1	55.0

Team Attack By Set

Set	K	E	TA	Pct
1	14	3	51	.216
2	6	5	32	.031
3	9	7	54	.037
4	17	7	52	.192

SET SCORES

	1	2	3	4	Team Records:
Delaware (1)	25	13	16	23	4-9
New Mexico (3)	21	25	25	25	6-3

TOTAL TEAM BLOCKS: 9.0

#	New Mexico	Attack				Serve			Block				Pts			
		S	K	E	TA	Pct	Ast	SA	SE	RE	Dig	BS		BA	BE	BH
1	AGRE, Mariah	4	6	1	12	.417	45	3	0	0	19	0	0	0	1	9.0
4	RHOADES, Ashley	4	14	7	53	.132	1	0	0	0	4	0	2	0	0	15.0
6	ROSS, Lexi	1	2	2	10	.000	0	0	0	0	0	0	2	0	0	3.0
7	FISHER, Cara	4	0	0	1	.000	2	1	0	0	15	0	0	0	0	1.0
13	WILLIAMSON, Kelly	4	23	6	57	.298	1	0	0	0	12	0	2	0	0	24.0
16	KRIEG, Elsa	4	3	3	16	.000	1	0	0	0	0	0	1	0	0	3.5
3	RIDDLE, Chantale	4	9	3	30	.200	1	0	0	0	2	1	3	0	0	11.5
5	RUSSELL, Jordan	1	0	0	0	.000	0	0	0	0	0	0	0	0	0	0.0
8	BUCK, Allison	4	0	0	0	.000	4	0	0	0	36	0	0	0	0	0.0
11	TROMBLEY, Jayla	3	4	2	11	.182	0	0	0	0	0	0	0	0	0	4.0
21	LOVATO, Miquella	4	0	0	0	.000	2	2	1	0	18	0	0	0	0	2.0
Totals		4	61	24	190	.195	57	6	1	0	106	1	10	0	1	73.0

Team Attack By Set

Set	K	E	TA	Pct
1	14	9	53	.094
2	17	5	37	.324
3	15	5	47	.213
4	15	5	53	.189

Site: Pittsburgh, PA (Fitzgerald FH)
Date: Sep 17, 2011 Attend: 52 Time: 1:59
Referees: Jerry Durishan, Patti Nelis

TOTAL TEAM BLOCKS: 6.0

Volleyball Box Score The Automated ScoreBook New Mexico vs Temple (Sep 17, 2011 at Pittsburgh, PA)

#	New Mexico	Attack				Serve			Block				Pts			
		S	K	E	TA	Pct	Ast	SA	SE	RE	Dig	BS		BA	BE	BH
1	AGRE, Mariah	3	4	0	7	.571	28	0	0	0	8	0	1	0	0	-
3	RIDDLE, Chantale	4	8	1	28	.250	1	0	0	0	1	1	3	0	1	-
4	RHOADES, Ashley	4	18	4	40	.350	0	0	0	0	5	0	3	0	1	-
6	ROSS, Lexi	2	1	1	7	.000	0	0	0	0	1	0	0	0	0	-
11	TROMBLEY, Jayla	3	4	5	18	-.056	0	0	0	0	2	0	1	0	0	-
13	WILLIAMSON, Kelly	4	12	4	45	.178	1	1	3	2	19	1	1	1	0	-
5	RUSSELL, Jordan	2	1	0	1	1.000	14	0	1	0	1	0	0	0	0	-
7	FISHER, Cara	4	0	0	1	.000	1	0	1	2	12	0	0	0	0	-
8	BUCK, Allison	4	0	0	1	.000	6	0	0	2	19	0	0	0	0	-
16	KRIEG, Elsa	3	5	1	8	.500	0	0	0	0	0	0	3	0	0	-
21	LOVATO, Miquella	4	0	0	0	.000	0	0	1	2	13	0	0	0	0	-
Totals		4	53	16	156	.237	51	1	6	8	81	2	12	1	2	-

Team Attack By Set

Set	K	E	TA	Pct
1	13	4	26	.346
2	13	7	45	.133
3	13	2	48	.229
4	14	3	37	.297

SET SCORES

	1	2	3	4	Team Records:
New Mexico (3)	25	16	25	25	7-3
Temple (1)	16	25	22	21	4-9

TOTAL TEAM BLOCKS: 8.0

#	Temple	Attack				Serve			Block				Pts			
		S	K	E	TA	Pct	Ast	SA	SE	RE	Dig	BS		BA	BE	BH
1	CONNATSER, Tiffany	4	2	0	7	.286	44	1	0	0	11	0	2	0	1	-
3	IACOBINI, Jennifer	4	1	0	6	.167	0	0	0	0	1	0	3	2	1	-
5	BURKERT, Elyse	4	19	4	46	.326	0	1	1	0	8	0	0	1	0	-
9	WALLACE, Collin	4	13	8	42	.119	0	0	2	0	14	0	0	0	0	-
10	FRAZER, Emily	4	2	2	8	.000	1	1	1	0	3	0	2	0	0	-
16	MATAUTIA, Gabriella	4	14	8	51	.118	1	4	3	0	11	0	3	0	0	-
6	TRISCHUK, Rikia	3	0	0	0	.000	0	0	0	0	1	0	0	0	0	-
11	PRANG, Liz	1	0	0	1	.000	0	0	0	0	0	0	0	0	0	-
14	TUPUOLA, Chelsea	4	0	0	3	.000	0	1	2	1	23	0	0	0	1	-
Totals		4	51	22	164	.177	46	8	9	1	72	0	10	3	3	-

Team Attack By Set

Set	K	E	TA	Pct
1	9	6	33	.091
2	11	1	34	.294
3	18	9	58	.155
4	13	6	39	.179

Site: Pittsburgh, PA (Fitzgerald FH)
Date: Sep 17, 2011 Attend: 67 Time: 1:48
Referees: Patti Nelis, Steve Grabowski

TOTAL TEAM BLOCKS: 5.0